

Product Name: MT-ND1 (12B19) Rabbit Monoclonal Antibody
Catalog #: AMRe14216



Summary

Production Name	MT-ND1 (12B19) Rabbit Monoclonal Antibody
Description	Rabbit Monoclonal Antibody
Host	Rabbit
Application	WB
Reactivity	Human,Mouse,Rat

Performance

Conjugation	Unconjugated
Modification	Unmodified
Isotype	IgG
Clonality	Monoclonal
Form	Liquid
Storage	Store at 4°C short term. Aliquot and store at -20°C long term. Avoid freeze/thaw cycles.
Buffer	Supplied in 50mM Tris-Glycine(pH 7.4), 0.15M NaCl, 40%Glycerol, 0.01% New type preservative N and 0.05% BSA.
Purification	Affinity purification

Immunogen

Gene Name	MT-ND1
Alternative Names	MT-ND1; MTND1; NAD1; NADH1; ND1;
Gene ID	4535.0
SwissProt ID	P03886.A synthetic peptide of human MT-ND1

Application

Dilution Ratio	WB: 1:1000-1:5000
Molecular Weight	36kDa

Background

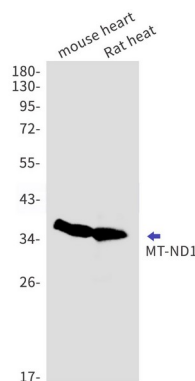
Product Name: MT-ND1 (12B19) Rabbit Monoclonal Antibody
Catalog #: AMRe14216



Core subunit of the mitochondrial membrane respiratory chain NADH dehydrogenase (Complex I) that is believed to belong to the minimal assembly required for catalysis. Complex I functions in the transfer of electrons from NADH to the respiratory chain. The immediate electron acceptor for the enzyme is believed to be ubiquinone. Core subunit of the mitochondrial membrane respiratory chain NADH dehydrogenase (Complex I) which catalyzes electron transfer from NADH through the respiratory chain, using ubiquinone as an electron acceptor (PubMed:1959619). Essential for the catalytic activity and assembly of complex I (PubMed:26929434, PubMed:1959619).

Research Area

Image Data



Western blot detection of MT-ND1 in mouse heart,Rat heart cell lysates using MT-ND1 antibody(1:1000 diluted).

Note

For research use only.