

Product Name: MHC class 1 (7D16) Rabbit Monoclonal Antibody
Catalog #: AMRe13877



Summary

Production Name	MHC class 1 (7D16) Rabbit Monoclonal Antibody
Description	Rabbit Monoclonal Antibody
Host	Rabbit
Application	WB
Reactivity	Human

Performance

Conjugation	Unconjugated
Modification	Unmodified
Isotype	IgG
Clonality	Monoclonal
Form	Liquid
Storage	Store at 4°C short term. Aliquot and store at -20°C long term. Avoid freeze/thaw cycles.
Buffer	Supplied in 50mM Tris-Glycine(pH 7.4), 0.15M NaCl, 40%Glycerol, 0.01% New type preservative N and 0.05% BSA.
Purification	Affinity purification

Immunogen

Gene Name	
Alternative Names	Aw-68;HLA class I histocompatibility antigen, A-28 alpha chain;MHC class I antigen A*68;HLA-A; MHC class I antigen HLA A heavy chain;
Gene ID	
SwissProt ID	P01891.A synthetic peptide of human HLA A

Application

Dilution Ratio	WB: 1:1000
Molecular Weight	41kDa

Product Name: MHC class 1 (7D16) Rabbit Monoclonal Antibody
Catalog #: AMRe13877

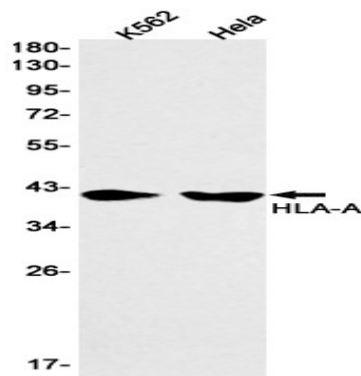


Background

MHC class 1 is involved in the presentation of foreign antigens to the immune system.

Research Area

Image Data



Western blot detection of HLA-A in K562, HeLa cell lysates using HLA-A antibody (1:1000 diluted).

Note

For research use only.