

Product Name: MEIS1 (2B12) Rabbit Monoclonal Antibody
Catalog #: AMRe13790

Summary

Production Name	MEIS1 (2B12) Rabbit Monoclonal Antibody
Description	Rabbit Monoclonal Antibody
Host	Rabbit
Application	WB,ELISA
Reactivity	Human,Mouse,Rat

Performance

Conjugation	Unconjugated
Modification	Unmodified
Isotype	IgG
Clonality	Monoclonal
Form	Liquid
Storage	Store at 4°C short term. Aliquot and store at -20°C long term. Avoid freeze/thaw cycles.
Buffer	Rabbit IgG in phosphate buffered saline , pH 7.4, 150mM NaCl, 0.02% New type preservative N and 50% glycerol. Store at +4°C short term. Store at -20°C long term. Avoid freeze / thaw cycle.
Purification	Affinity purification

Immunogen

Gene Name	MEIS1
Alternative Names	Homeo box protein Meis1; Leukemogenic homolog protein; MEIS 1; Meis homeo box 1; Meis1; Meis1 mouse homolog; MEIS1 protein;
Gene ID	4211.0
SwissProt ID	O00470.

Application

Dilution Ratio	WB 1:1000-1:5000
Molecular Weight	43kDa

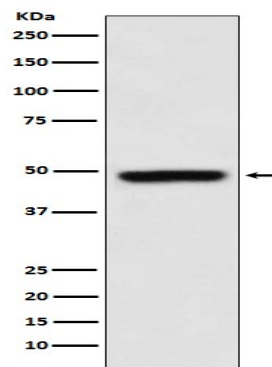
Product Name: MEIS1 (2B12) Rabbit Monoclonal Antibody
Catalog #: AMRe13790

Background

MEIS proteins belong to the TALE (Three Amino Acid Loop Extension) homeobox containing transcription factor family. MEIS1 has been associated with leukemogenesis and neuroblastoma. Acts as a transcriptional regulator of PAX6. Acts as a transcriptional activator of PF4 in complex with PBX1 or PBX2. Required for hematopoiesis, megakaryocyte lineage development and vascular patterning. May function as a cofactor for HOXA7 and HOXA9 in the induction of myeloid leukemias.

Research Area

Image Data



Western blot analysis of MEIS1 expression in K562 cell lysate.

Note

For research use only.