

Product Name: MDH1 (4Q13) Rabbit Monoclonal Antibody
Catalog #: AMRe13752

Summary

Production Name	MDH1 (4Q13) Rabbit Monoclonal Antibody
Description	Rabbit Monoclonal Antibody
Host	Rabbit
Application	WB,ELISA
Reactivity	Human,Mouse,Rat

Performance

Conjugation	Unconjugated
Modification	Unmodified
Isotype	IgG
Clonality	Monoclonal
Form	Liquid
Storage	Store at 4°C short term. Aliquot and store at -20°C long term. Avoid freeze/thaw cycles.
Buffer	Rabbit IgG in phosphate buffered saline , pH 7.4, 150mM NaCl, 0.02% New type preservative N and 50% glycerol. Store at +4°C short term. Store at -20°C long term. Avoid freeze / thaw cycle.
Purification	Affinity purification

Immunogen

Gene Name	MDH1
Alternative Names	MDH s; mdh1; MDHA; MDHs; MOR2;
Gene ID	4190.0
SwissProt ID	P40925.

Application

Dilution Ratio	WB 1:1000~1:5000
Molecular Weight	36kDa

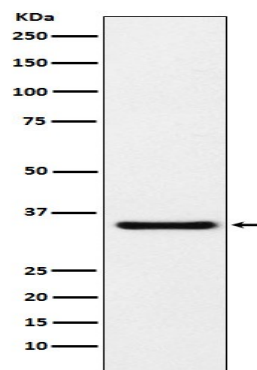
Product Name: MDH1 (4Q13) Rabbit Monoclonal Antibody
Catalog #: AMRe13752

Background

Belongs to the LDH/MDH superfamily. MDH type 2 family. Catalyzes the reduction of aromatic alpha-keto acids in the presence of NADH (PubMed:3052244). Plays essential roles in the malate- aspartate shuttle and the tricarboxylic acid cycle, important in mitochondrial NADH supply for oxidative phosphorylation (PubMed:31538237).

Research Area

Image Data



Western blot analysis of MDH1 expression in HeLa cell lysate.

Note

For research use only.