

Product Name: MCM5 (1M15) Rabbit Monoclonal Antibody
Catalog #: AMRe13723

Summary

Production Name	MCM5 (1M15) Rabbit Monoclonal Antibody
Description	Rabbit Monoclonal Antibody
Host	Rabbit
Application	WB
Reactivity	Human,Mouse

Performance

Conjugation	Unconjugated
Modification	Unmodified
Isotype	IgG
Clonality	Monoclonal
Form	Liquid
Storage	Store at 4°C short term. Aliquot and store at -20°C long term. Avoid freeze/thaw cycles.
Buffer	Supplied in 50mM Tris-Glycine(pH 7.4), 0.15M NaCl, 40%Glycerol, 0.01% New type preservative N and 0.05% BSA.
Purification	Affinity purification

Immunogen

Gene Name	MCM5
Alternative Names	CDC46; MCM5; MGC5315; P1 CDC46;
Gene ID	4174.0
SwissProt ID	P33992.A synthetic peptide of human MCM5

Application

Dilution Ratio	WB: 1:2000
Molecular Weight	82kDa

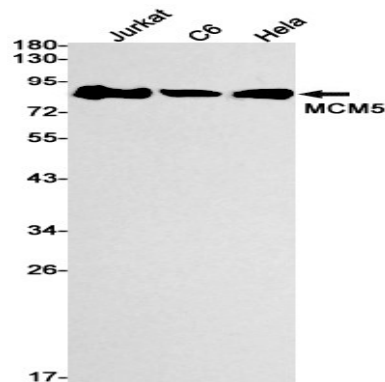
Background

Product Name: MCM5 (1M15) Rabbit Monoclonal Antibody
Catalog #: AMRe13723

MCM5 Belongs to the MCM family. Acts as component of the MCM2-7 complex (MCM complex) which is the putative replicative helicase essential for 'once per cell cycle' DNA replication initiation and elongation in eukaryotic cells. The active ATPase sites in the MCM2-7 ring are formed through the interaction surfaces of two neighboring subunits such that a critical structure of a conserved arginine finger motif is provided in trans relative to the ATP-binding site of the Walker A box of the adjacent subunit. The six ATPase active sites, however, are likely to contribute differentially to the complex helicase activity.

Research Area

Image Data



Western blot detection of MCM5 in Jurkat,C6,HeLa cell lysates using MCM5 antibody(1:1000 diluted).

Note

For research use only.