

Product Name: MCM4 (8D13) Rabbit Monoclonal Antibody
Catalog #: AMRe13721

Summary

| | |
|------------------------|--|
| Production Name | MCM4 (8D13) Rabbit Monoclonal Antibody |
| Description | Rabbit Monoclonal Antibody |
| Host | Rabbit |
| Application | WB |
| Reactivity | Human,Mouse |

Performance

| | |
|---------------------|--|
| Conjugation | Unconjugated |
| Modification | Unmodified |
| Isotype | IgG |
| Clonality | Monoclonal |
| Form | Liquid |
| Storage | Store at 4°C short term. Aliquot and store at -20°C long term. Avoid freeze/thaw cycles. |
| Buffer | Supplied in 50mM Tris-Glycine(pH 7.4), 0.15M NaCl, 40%Glycerol, 0.01% New type preservative N and 0.05% BSA. |
| Purification | Affinity purification |

Immunogen

| | |
|--------------------------|--|
| Gene Name | MCM4 |
| Alternative Names | CDC21; CDC54; hCdc21; P1-CDC21; |
| Gene ID | 4173.0 |
| SwissProt ID | P33991.A synthetic peptide of human MCM4 |

Application

| | |
|-------------------------|--------------------|
| Dilution Ratio | WB: 1:2000-1:10000 |
| Molecular Weight | 97kDa |

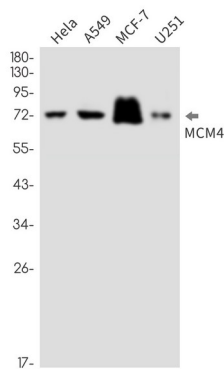
Background

Product Name: MCM4 (8D13) Rabbit Monoclonal Antibody
Catalog #: AMRe13721

Acts as component of the MCM2-7 complex (MCM complex) which is the putative replicative helicase essential for 'once per cell cycle' DNA replication initiation and elongation in eukaryotic cells. Acts as component of the MCM2-7 complex (MCM complex) which is the putative replicative helicase essential for 'once per cell cycle' DNA replication initiation and elongation in eukaryotic cells. The active ATPase sites in the MCM2-7 ring are formed through the interaction surfaces of two neighboring subunits such that a critical structure of a conserved arginine finger motif is provided in trans relative to the ATP-binding site of the Walker A box of the adjacent subunit. The six ATPase active sites, however, are likely to contribute differentially to the complex helicase activity.

Research Area

Image Data



Western blot detection of MCM4 in HeLa,A549,MCF-7,U251 cell lysates using MCM4 antibody(1:1000 diluted).

Note

For research use only.