

**Product Name: Mast Cell Tryptase (7Q2) Rabbit
Monoclonal Antibody
Catalog #: AMRe13658**

Summary

Production Name	Mast Cell Tryptase (7Q2) Rabbit Monoclonal Antibody
Description	Rabbit Monoclonal Antibody
Host	Rabbit
Application	WB,ELISA
Reactivity	Human,Mouse,Rat

Performance

Conjugation	Unconjugated
Modification	Unmodified
Isotype	IgG
Clonality	Monoclonal
Form	Liquid
Storage	Store at 4°C short term. Aliquot and store at -20°C long term. Avoid freeze/thaw cycles.
Buffer	Rabbit IgG in phosphate buffered saline , pH 7.4, 150mM NaCl, 0.02% New type preservative N and 50% glycerol. Store at +4°C short term. Store at -20°C long term. Avoid freeze / thaw cycle.
Purification	Affinity purification

Immunogen

Gene Name	TPSAB1
Alternative Names	TPS1; TPS2; TPSAB1; TPSB1; MCP 7 ; Mast cell protease 7; Tryptase alpha 1;
Gene ID	7177.0
SwissProt ID	Q15661.

Application

Dilution Ratio	WB 1:500-1:2000
Molecular Weight	31kDa

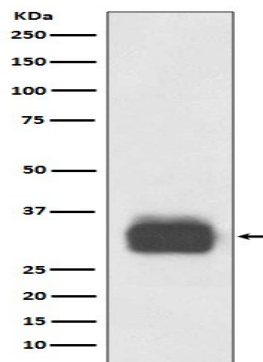
**Product Name: Mast Cell Tryptase (7Q2) Rabbit
Monoclonal Antibody
Catalog #: AMRe13658**

Background

Tryptases comprise a family of trypsin-like serine proteases, the peptidase family S1. Tryptases are enzymatically active only as heparin-stabilized tetramers, and they are resistant to all known endogenous proteinase inhibitors. Several tryptase genes are clustered on chromosome 16p13.3. These genes are characterized by several distinct features. Tryptase is the major neutral protease present in mast cells and is secreted upon the coupled activation-degranulation response of this cell type. May play a role in innate immunity. Isoform 2 cleaves large substrates, such as fibronectin, more efficiently than isoform 1, but seems less efficient toward small substrates (PubMed:18854315).

Research Area

Image Data



Western blot analysis of Mast Cell Tryptase expression in Human tonsil lysate.

Note

For research use only.