

**Product Name: Mast Cell Chymase (13J16) Rabbit  
Monoclonal Antibody  
Catalog #: AMRe13657**

---

## Summary

<b>Production Name</b>	Mast Cell Chymase (13J16) Rabbit Monoclonal Antibody
<b>Description</b>	Rabbit Monoclonal Antibody
<b>Host</b>	Rabbit
<b>Application</b>	WB,ELISA
<b>Reactivity</b>	Human

## Performance

<b>Conjugation</b>	Unconjugated
<b>Modification</b>	Unmodified
<b>Isotype</b>	IgG
<b>Clonality</b>	Monoclonal
<b>Form</b>	Liquid
<b>Storage</b>	Store at 4°C short term. Aliquot and store at -20°C long term. Avoid freeze/thaw cycles.
<b>Buffer</b>	Rabbit IgG in phosphate buffered saline , pH 7.4, 150mM NaCl, 0.02% New type preservative N and 50% glycerol. Store at +4°C short term. Store at -20°C long term. Avoid freeze / thaw cycle.
<b>Purification</b>	Affinity purification

## Immunogen

<b>Gene Name</b>	CMA1
<b>Alternative Names</b>	Chymase 1; Chymase; CMA1; CYH; CYM; Mcp-5; MCP3P; Mcpt5; MCT1; MMCP-5;
<b>Gene ID</b>	1215.0
<b>SwissProt ID</b>	P23946.

## Application

<b>Dilution Ratio</b>	WB 1:1000-1:5000
<b>Molecular Weight</b>	27kDa

**Product Name: Mast Cell Chymase (13J16) Rabbit  
Monoclonal Antibody  
Catalog #: AMRe13657**

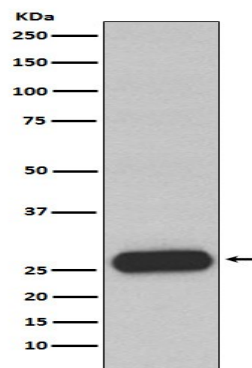
---

## Background

Major secreted protease of mast cells with suspected roles in vasoactive peptide generation, extracellular matrix degradation, and regulation of gland secretion. Major secreted protease of mast cells with suspected roles in vasoactive peptide generation, extracellular matrix degradation, and regulation of gland secretion.

## Research Area

## Image Data



Western blot analysis of Mast Cell Chymase expression in Human small intestine lysate.

## Note

For research use only.