

**Product Name: Mammaglobin A (8R14) Rabbit
Monoclonal Antibody
Catalog #: AMRe13613**

Summary

Production Name	Mammaglobin A (8R14) Rabbit Monoclonal Antibody
Description	Rabbit Monoclonal Antibody
Host	Rabbit
Application	WB,ELISA
Reactivity	Human,Rat

Performance

Conjugation	Unconjugated
Modification	Unmodified
Isotype	IgG
Clonality	Monoclonal
Form	Liquid
Storage	Store at 4°C short term. Aliquot and store at -20°C long term. Avoid freeze/thaw cycles.
Buffer	Rabbit IgG in phosphate buffered saline , pH 7.4, 150mM NaCl, 0.02% New type preservative N and 50% glycerol. Store at +4°C short term. Store at -20°C long term. Avoid freeze / thaw cycle.
Purification	Affinity purification

Immunogen

Gene Name	SCGB2A2
Alternative Names	Mammaglobin 1; Mammaglobin-A; MGB1; Scgb2a2; SG2A2; UGB2;
Gene ID	4250.0
SwissProt ID	Q13296.

Application

Dilution Ratio	WB 1:500-1:2000
Molecular Weight	10kDa

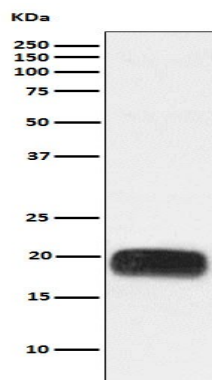
**Product Name: Mammaglobin A (8R14) Rabbit
Monoclonal Antibody
Catalog #: AMRe13613**

Background

Belongs to the secretoglobin family. Lipophilin subfamily.

Research Area

Image Data



Western blot analysis of Mammaglobin A expression in Human breast cancer lysate.

Note

For research use only.