

Product Name: MAGE 1 (12F10) Rabbit Monoclonal Antibody
Catalog #: AMRe13588



Summary

Production Name	MAGE 1 (12F10) Rabbit Monoclonal Antibody
Description	Rabbit Monoclonal Antibody
Host	Rabbit
Application	WB
Reactivity	Human,Mouse,Rat

Performance

Conjugation	Unconjugated
Modification	Unmodified
Isotype	IgG
Clonality	Monoclonal
Form	Liquid
Storage	Store at 4°C short term. Aliquot and store at -20°C long term. Avoid freeze/thaw cycles.
Buffer	Rabbit IgG in phosphate buffered saline , pH 7.4, 150mM NaCl, 0.02% New type preservative N and 50% glycerol. Store at +4°C short term. Store at -20°C long term. Avoid freeze / thaw cycle.
Purification	Affinity purification

Immunogen

Gene Name	MAGEA1
Alternative Names	CT1.1; MAGE1; MAGE1A; MAGEA1;
Gene ID	4100.0
SwissProt ID	P43355.

Application

Dilution Ratio	WB 1:500-1:2000
Molecular Weight	34kDa

Product Name: MAGE 1 (12F10) Rabbit Monoclonal Antibody
Catalog #: AMRe13588

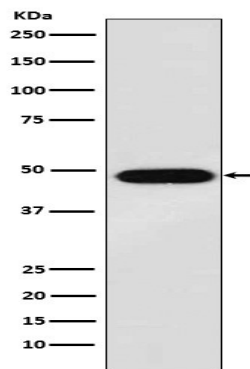


Background

May be involved in transcriptional regulation through interaction with SNW1 and recruiting histone deactelyase HDAC1. May inhibit notch intracellular domain (NICD) transactivation. May play a role in embryonal development and tumor transformation or aspects of tumor progression. May be involved in transcriptional regulation through interaction with SNW1 and recruiting histone deactelyase HDAC1. May inhibit notch intracellular domain (NICD) transactivation. May play a role in embryonal development and tumor transformation or aspects of tumor progression. Antigen recognized on a melanoma by autologous cytolytic T-lymphocytes.

Research Area

Image Data



Western blot analysis of MAGE 1 expression in A375 cell lysate.

Note

For research use only.