

Product Name: LI Cadherin (14P12) Rabbit Monoclonal Antibody
Catalog #: AMRe13300



Summary

Production Name	LI Cadherin (14P12) Rabbit Monoclonal Antibody
Description	Rabbit Monoclonal Antibody
Host	Rabbit
Application	WB,ELISA
Reactivity	Human

Performance

Conjugation	Unconjugated
Modification	Unmodified
Isotype	IgG
Clonality	Monoclonal
Form	Liquid
Storage	Store at 4°C short term. Aliquot and store at -20°C long term. Avoid freeze/thaw cycles.
Buffer	Rabbit IgG in phosphate buffered saline , pH 7.4, 150mM NaCl, 0.02% New type preservative N and 50% glycerol. Store at +4°C short term. Store at -20°C long term. Avoid freeze / thaw cycle.
Purification	Affinity purification

Immunogen

Gene Name	CDH17
Alternative Names	Cadherin 16; Cadherin 17; CDH16; Cdh17; Formerly CDH16; HPT 1; LI-cadherin; Liver Cadherin; liver intestine cadherin;
Gene ID	1015.0
SwissProt ID	Q12864.

Application

Dilution Ratio	WB 1:500-1:2000
Molecular Weight	92kDa

Product Name: LI Cadherin (14P12) Rabbit Monoclonal Antibody
Catalog #: AMRe13300

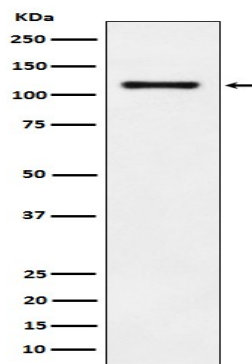


Background

Cadherins are calcium dependent cell adhesion proteins. They preferentially interact with themselves in a homophilic manner in connecting cells; cadherins may thus contribute to the sorting of heterogeneous cell types. LI-cadherin may have a role in the morphological organization of liver and intestine. Involved in intestinal peptide transport. Cadherins are calcium-dependent cell adhesion proteins. They preferentially interact with themselves in a homophilic manner in connecting cells; cadherins may thus contribute to the sorting of heterogeneous cell types. LI-cadherin may have a role in the morphological organization of liver and intestine. Involved in intestinal peptide transport.

Research Area

Image Data



Western blot analysis of LI-Cadherin expression in HT-29 cell lysate.

Note

For research use only.