

**Product Name: LDL Receptor (14L10) Rabbit
Monoclonal Antibody
Catalog #: AMRe13267**

Summary

Production Name	LDL Receptor (14L10) Rabbit Monoclonal Antibody
Description	Rabbit Monoclonal Antibody
Host	Rabbit
Application	WB,ELISA
Reactivity	Human,Mouse

Performance

Conjugation	Unconjugated
Modification	Unmodified
Isotype	IgG
Clonality	Monoclonal
Form	Liquid
Storage	Store at 4°C short term. Aliquot and store at -20°C long term. Avoid freeze/thaw cycles.
Buffer	Rabbit IgG in phosphate buffered saline , pH 7.4, 150mM NaCl, 0.02% New type preservative N and 50% glycerol. Store at +4°C short term. Store at -20°C long term. Avoid freeze / thaw cycle.
Purification	Affinity purification

Immunogen

Gene Name	LDLR
Alternative Names	FH ; FHC ; LDL receptor; LDLCQ2; LDLR ; Low Density Lipoprotein Receptor; Low density lipoprotein receptor class A domain containing protein 3;
Gene ID	3949.0
SwissProt ID	P01130.

Application

Dilution Ratio	WB 1:1000-1:2000
Molecular Weight	95kDa

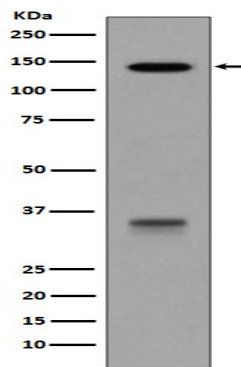
**Product Name: LDL Receptor (14L10) Rabbit
Monoclonal Antibody
Catalog #: AMRe13267**

Background

Binds LDL, the major cholesterol-carrying lipoprotein of plasma, and transports it into cells by endocytosis. In order to be internalized, the receptor-ligand complexes must first cluster into clathrin-coated pits. In case of HIV-1 infection, functions as a receptor for extracellular Tat in neurons, mediating its internalization in uninfected cells. Binds LDL, the major cholesterol-carrying lipoprotein of plasma, and transports it into cells by endocytosis. In order to be internalized, the receptor-ligand complexes must first cluster into clathrin-coated pits.

Research Area

Image Data



Western blot analysis of LDLR expression in HepG2 cell lysate.

Note

For research use only.