

**Product Name: LAMP2 (4P12) Rabbit Monoclonal Antibody**  
**Catalog #: AMRe13209**

---

## Summary

<b>Production Name</b>	LAMP2 (4P12) Rabbit Monoclonal Antibody
<b>Description</b>	Rabbit Monoclonal Antibody
<b>Host</b>	Rabbit
<b>Application</b>	WB,ELISA
<b>Reactivity</b>	Human,Mouse,Rat

## Performance

<b>Conjugation</b>	Unconjugated
<b>Modification</b>	Unmodified
<b>Isotype</b>	IgG
<b>Clonality</b>	Monoclonal
<b>Form</b>	Liquid
<b>Storage</b>	Store at 4°C short term. Aliquot and store at -20°C long term. Avoid freeze/thaw cycles.
<b>Buffer</b>	Rabbit IgG in phosphate buffered saline , pH 7.4, 150mM NaCl, 0.02% New type preservative N and 50% glycerol. Store at +4°C short term. Store at -20°C long term. Avoid freeze / thaw cycle.
<b>Purification</b>	Affinity purification

## Immunogen

<b>Gene Name</b>	LAMP2
<b>Alternative Names</b>	LAMPB; CD107b; LAMP-2; LGP110;
<b>Gene ID</b>	3920.0
<b>SwissProt ID</b>	P13473.

## Application

<b>Dilution Ratio</b>	WB 1:500-1:2000
<b>Molecular Weight</b>	45kDa

**Product Name: LAMP2 (4P12) Rabbit Monoclonal Antibody**  
**Catalog #: AMRe13209**



---

## Background

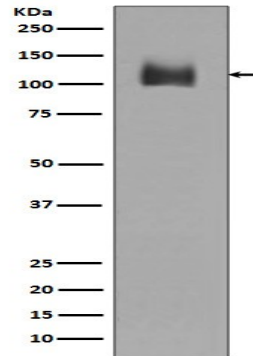
Lysosomal-associated membrane protein 2 (LAMP2, synonyms: LAMPB, CD107b) is a member of a family of membrane glycoproteins. This glycoprotein provides selectins with carbohydrate ligands. LAMP2 may play a role in tumor cell metastasis. It may also function in the protection, maintenance, and adhesion of the lysosome. Prior to posttranslational modification, Lysosome Associated Membrane Protein 2 (LAMP2) is a ~45 kDa polypeptide. Plays an important role in chaperone-mediated autophagy, a process that mediates lysosomal degradation of proteins in response to various stresses and as part of the normal turnover of proteins with a long biological half-life (PubMed: [8662539](http://www.uniprot.org/citations/8662539), PubMed: [11082038](http://www.uniprot.org/citations/11082038), PubMed: [18644871](http://www.uniprot.org/citations/18644871), PubMed: [24880125](http://www.uniprot.org/citations/24880125), PubMed: [27628032](http://www.uniprot.org/citations/27628032)). Functions by binding target proteins, such as GAPDH and MLLT11, and targeting them for lysosomal degradation (PubMed: [8662539](http://www.uniprot.org/citations/8662539), PubMed: [11082038](http://www.uniprot.org/citations/11082038), PubMed: [18644871](http://www.uniprot.org/citations/18644871), PubMed: [24880125](http://www.uniprot.org/citations/24880125)). Plays a role in lysosomal protein degradation in response to starvation (By similarity). Required for the fusion of autophagosomes with lysosomes during autophagy (PubMed: [27628032](http://www.uniprot.org/citations/27628032)). Cells that lack LAMP2 express normal levels of VAMP8, but fail to accumulate STX17 on autophagosomes, which is the most likely explanation for the lack of fusion between autophagosomes and lysosomes (PubMed: [27628032](http://www.uniprot.org/citations/27628032)). Required for normal degradation of the contents of autophagosomes (PubMed: [27628032](http://www.uniprot.org/citations/27628032)). Required for efficient MHCII-mediated presentation of exogenous antigens via its function in lysosomal protein degradation; antigenic peptides generated by proteases in the endosomal/lysosomal compartment are captured by nascent MHCII subunits (PubMed: [20518820](http://www.uniprot.org/citations/20518820)). Is not required for efficient MHCII-mediated presentation of endogenous antigens (PubMed: [20518820](http://www.uniprot.org/citations/20518820)).

## Research Area

## Image Data

**Product Name: LAMP2 (4P12) Rabbit Monoclonal Antibody**  
**Catalog #: AMRe13209**

---



Western blot analysis of LAMP2 expression in JAR cell lysate.

**Note**

For research use only.