

**Product Name: Laminin gamma 1 (9A17) Rabbit
Monoclonal Antibody
Catalog #: AMRe13195**

Summary

| | |
|------------------------|---|
| Production Name | Laminin gamma 1 (9A17) Rabbit Monoclonal Antibody |
| Description | Rabbit Monoclonal Antibody |
| Host | Rabbit |
| Application | WB |
| Reactivity | Human,Mouse,Rat |

Performance

| | |
|---------------------|--|
| Conjugation | Unconjugated |
| Modification | Unmodified |
| Isotype | IgG |
| Clonality | Monoclonal |
| Form | Liquid |
| Storage | Store at 4°C short term. Aliquot and store at -20°C long term. Avoid freeze/thaw cycles. |
| Buffer | Supplied in 50mM Tris-Glycine(pH 7.4), 0.15M NaCl, 40%Glycerol, 0.01% New type preservative N and 0.05% BSA. |
| Purification | Affinity purification |

Immunogen

| | |
|--------------------------|--|
| Gene Name | LAMB2; lamc1; Laminin B2 chain; Laminin subunit gamma-1; Laminin-1 subunit gamma; Laminin-10 subunit gamma; Laminin-11 subunit gamma; Laminin-2 subunit gamma; Laminin-3 subunit gamma; Laminin-4 subunit gamma; Laminin-6 subunit gamma; Laminin-7 subunit gamma; Laminin-8 subunit gamma; Laminin-9 subunit gamma; |
| Alternative Names | |
| Gene ID | |
| SwissProt ID | P11047/Q5VYE7/Q6NVY8.Recombinant protein of human Laminin gamma 1 |

Application

| | |
|-----------------------|------------|
| Dilution Ratio | WB: 1:1000 |
|-----------------------|------------|

**Product Name: Laminin gamma 1 (9A17) Rabbit
Monoclonal Antibody
Catalog #: AMRe13195**

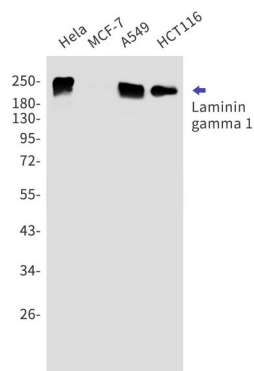
Molecular Weight 178kDa

Background

Binding to cells via a high affinity receptor, laminin is thought to mediate the attachment, migration and organization of cells into tissues during embryonic development by interacting with other extracellular matrix components.

Research Area

Image Data



Western blot detection of Laminin gamma 1 in HeLa, MCF-7, A549, HCT116 cell lysates using Laminin gamma 1 antibody (1:1000 diluted).

Note

For research use only.