

**Product Name: KMT6 / EZH2 (6S19) Rabbit Monoclonal Antibody**  
**Catalog #: AMRe13087**

---

## Summary

<b>Production Name</b>	KMT6 / EZH2 (6S19) Rabbit Monoclonal Antibody
<b>Description</b>	Rabbit Monoclonal Antibody
<b>Host</b>	Rabbit
<b>Application</b>	WB
<b>Reactivity</b>	Human,Mouse,Rat

## Performance

<b>Conjugation</b>	Unconjugated
<b>Modification</b>	Unmodified
<b>Isotype</b>	IgG
<b>Clonality</b>	Monoclonal
<b>Form</b>	Liquid
<b>Storage</b>	Store at 4°C short term. Aliquot and store at -20°C long term. Avoid freeze/thaw cycles.
<b>Buffer</b>	Supplied in 50mM Tris-Glycine(pH 7.4), 0.15M NaCl, 40%Glycerol, 0.01% New type preservative N and 0.05% BSA.
<b>Purification</b>	Affinity purification

## Immunogen

<b>Gene Name</b>	EZH2
<b>Alternative Names</b>	EZH 2; EZH1; EZH2; EZH2b; KMT 6; KMT6; KMT6A;
<b>Gene ID</b>	2146.0
<b>SwissProt ID</b>	Q15910.A synthetic peptide of human KMT6/EZH2

## Application

<b>Dilution Ratio</b>	WB: 1:1000
<b>Molecular Weight</b>	85kDa

## Background

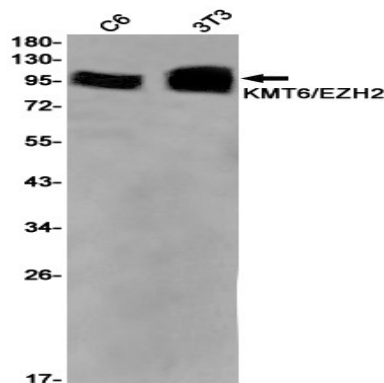
---

**Product Name: KMT6 / EZH2 (6S19) Rabbit Monoclonal Antibody**  
**Catalog #: AMRe13087**

Polycomb group (PcG) protein. Catalytic subunit of the PRC2/EED-EZH2 complex, which methylates 'Lys-9' and 'Lys-27' of histone H3, leading to transcriptional repression of the affected target gene. Able to mono-, di- and trimethylate 'Lys-27' of histone H3 to form H3K27me1, H3K27me2 and H3K27me3, respectively. Compared to EZH2-containing complexes, it is more abundant in embryonic stem cells and plays a major role in forming H3K27me3, which is required for embryonic stem cell identity and proper differentiation. Polycomb group (PcG) protein. Catalytic subunit of the PRC2/EED-EZH2 complex, which methylates 'Lys-9' (H3K9me) and 'Lys-27' (H3K27me) of histone H3, leading to transcriptional repression of the affected target gene. Able to mono-, di- and trimethylate 'Lys-27' of histone H3 to form H3K27me1, H3K27me2 and H3K27me3, respectively. Displays a preference for substrates with less methylation, loses activity when progressively more methyl groups are incorporated into H3K27, H3K27me0 > H3K27me1 > H3K27me2 (PubMed:<a href="http://www.uniprot.org/citations/22323599" target="\_blank">22323599</a>, PubMed:<a href="http://www.uniprot.org/citations/30923826" target="\_blank">30923826</a>). Compared to EZH1-containing complexes, it is more abundant in embryonic stem cells and plays a major role in forming H3K27me3, which is required for embryonic stem cell identity and proper differentiation. The PRC2/EED-EZH2 complex may also serve as a recruiting platform for DNA methyltransferases, thereby linking two epigenetic repression systems. Genes repressed by the PRC2/EED-EZH2 complex include HOXC8, HOXA9, MYT1, CDKN2A and retinoic acid target genes. EZH2 can also methylate non-histone proteins such as the transcription factor GATA4 and the nuclear receptor RORA. Regulates the circadian clock via histone methylation at the promoter of the circadian genes. Essential for the CRY1/2-mediated repression of the transcriptional activation of PER1/2 by the CLOCK-ARNTL/BMAL1 heterodimer; involved in the di and trimethylation of 'Lys-27' of histone H3 on PER1/2 promoters which is necessary for the CRY1/2 proteins to inhibit transcription.

## Research Area

## Image Data



Western blot detection of KMT6/EZH2 in C6,3T3 cell lysates using KMT6/EZH2 antibody(1:1000 diluted).

**Product Name: KMT6 / EZH2 (6S19) Rabbit Monoclonal  
Antibody**  
**Catalog #: AMRe13087**

---



**Note**

For research use only.