

**Product Name: KMT4 / Dot1L (9V11) Rabbit  
Monoclonal Antibody  
Catalog #: AMRe13085**

---

## Summary

|                        |  |
|------------------------|--|
| <b>Production Name</b> | KMT4 / Dot1L (9V11) Rabbit Monoclonal Antibody |
| <b>Description</b>     | Rabbit Monoclonal Antibody                     |
| <b>Host</b>            | Rabbit   |
| <b>Application</b>     | WB   |
| <b>Reactivity</b>      | Human,Mouse,Rat                                |

## Performance

|                     |  |
|---------------------|--|
| <b>Conjugation</b>  | Unconjugated   |
| <b>Modification</b> | Unmodified   |
| <b>Isotype</b>      | IgG  |
| <b>Clonality</b>    | Monoclonal   |
| <b>Form</b>         | Liquid   |
| <b>Storage</b>      | Store at 4°C short term. Aliquot and store at -20°C long term. Avoid freeze/thaw cycles.                     |
| <b>Buffer</b>       | Supplied in 50mM Tris-Glycine(pH 7.4), 0.15M NaCl, 40%Glycerol, 0.01% New type preservative N and 0.05% BSA. |
| <b>Purification</b> | Affinity purification  |

## Immunogen

|                          |   |
|--------------------------|---|
| <b>Gene Name</b>         | DOT1L   |
| <b>Alternative Names</b> | DOT 1; DOT1L; KMT4; Histone methyltransferase DOT1L; H3 lysine-79 specific; |
| <b>Gene ID</b>           | 84444.0   |
| <b>SwissProt ID</b>      | Q8TEK3.Recombinant protein of human KMT4/Dot1L                              |

## Application

|                         |            |
|-------------------------|------------|
| <b>Dilution Ratio</b>   | WB: 1:1000 |
| <b>Molecular Weight</b> | 165kDa     |

## Background

---

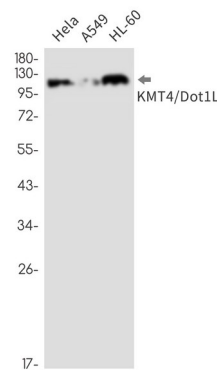
**Product Name: KMT4 / Dot1L (9V11) Rabbit  
Monoclonal Antibody  
Catalog #: AMRe13085**

---

Histone methyltransferase. Methylates 'Lys-79' of histone H3. Nucleosomes are preferred as substrate compared to free histones. Binds to DNA. Histone methyltransferase. Methylates 'Lys-79' of histone H3. Nucleosomes are preferred as substrate compared to free histones (PubMed: [12123582](http://www.uniprot.org/citations/12123582)). Binds to DNA (PubMed: [12628190](http://www.uniprot.org/citations/12628190)).

## Research Area

## Image Data



Western blot detection of KMT4/Dot1L in HeLa,A549,HL-60 cell lysates using KMT4/Dot1L antibody(1:1000 diluted).

## Note

For research use only.