

Product Name: KLKB1 (6P10) Rabbit Monoclonal Antibody
Catalog #: AMRe13077

Summary

Production Name	KLKB1 (6P10) Rabbit Monoclonal Antibody
Description	Rabbit Monoclonal Antibody
Host	Rabbit
Application	WB,ELISA
Reactivity	Human,Rat

Performance

Conjugation	Unconjugated
Modification	Unmodified
Isotype	IgG
Clonality	Monoclonal
Form	Liquid
Storage	Store at 4°C short term. Aliquot and store at -20°C long term. Avoid freeze/thaw cycles.
Buffer	Rabbit IgG in phosphate buffered saline , pH 7.4, 150mM NaCl, 0.02% New type preservative N and 50% glycerol. Store at +4°C short term. Store at -20°C long term. Avoid freeze / thaw cycle.
Purification	Affinity purification

Immunogen

Gene Name	KLKB1
Alternative Names	Fletcher factor; kallikrein B plasma; Kallikrein B1; Kininogenin; KLK3; KLKB1; PKK; PKKD; Plasma kallikrein light chain; PPK; Prekallikrein;
Gene ID	3818.0
SwissProt ID	P03952.

Application

Dilution Ratio	WB 1:500-1:2000
Molecular Weight	71kDa

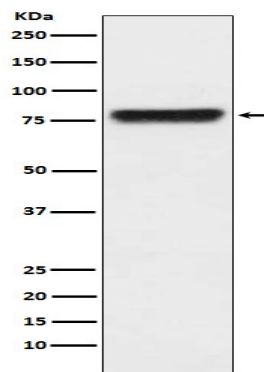
Product Name: KLKB1 (6P10) Rabbit Monoclonal Antibody
Catalog #: AMRe13077

Background

The enzyme cleaves Lys-Arg and Arg-Ser bonds. It activates, in a reciprocal reaction, factor XII after its binding to a negatively charged surface. It also releases bradykinin from HMW kininogen and may also play a role in the renin-angiotensin system by converting prorenin into renin. The enzyme cleaves Lys-Arg and Arg-Ser bonds. It activates, in a reciprocal reaction, factor XII after its binding to a negatively charged surface. It also releases bradykinin from HMW kininogen and may also play a role in the renin-angiotensin system by converting prorenin into renin.

Research Area

Image Data



Western blot analysis of KLKB1 expression in human plasma lysate.

Note

For research use only.