

Product Name: Kir2.1 (17H9) Rabbit Monoclonal Antibody
Catalog #: AMRe13025

Summary

Production Name	Kir2.1 (17H9) Rabbit Monoclonal Antibody
Description	Rabbit Monoclonal Antibody
Host	Rabbit
Application	WB,ELISA
Reactivity	Human,Mouse,Rat

Performance

Conjugation	Unconjugated
Modification	Unmodified
Isotype	IgG
Clonality	Monoclonal
Form	Liquid
Storage	Store at 4°C short term. Aliquot and store at -20°C long term. Avoid freeze/thaw cycles.
Buffer	Rabbit IgG in phosphate buffered saline , pH 7.4, 150mM NaCl, 0.02% New type preservative N and 50% glycerol. Store at +4°C short term. Store at -20°C long term. Avoid freeze / thaw cycle.
Purification	Affinity purification

Immunogen

Gene Name	KCNJ2
Alternative Names	KCNJ2; ATFB9; HHBIRK1; IRK1; KIR2.1; LQT7; HIRK1; IRK-1; HHIRK1; SQT3;
Gene ID	3759.0
SwissProt ID	P63252.

Application

Dilution Ratio	WB 1:500-1:2000
Molecular Weight	48kDa

Product Name: Kir2.1 (17H9) Rabbit Monoclonal Antibody
Catalog #: AMRe13025

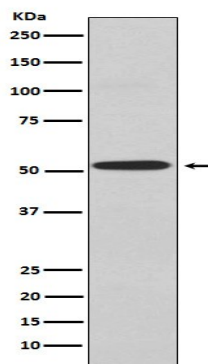


Background

Probably participates in establishing action potential waveform and excitability of neuronal and muscle tissues. Inward rectifier potassium channels are characterized by a greater tendency to allow potassium to flow into the cell rather than out of it. Probably participates in establishing action potential waveform and excitability of neuronal and muscle tissues. Inward rectifier potassium channels are characterized by a greater tendency to allow potassium to flow into the cell rather than out of it. Their voltage dependence is regulated by the concentration of extracellular potassium; as external potassium is raised, the voltage range of the channel opening shifts to more positive voltages. The inward rectification is mainly due to the blockage of outward current by internal magnesium. Can be blocked by extracellular barium or cesium.

Research Area

Image Data



Western blot analysis of Kir2.1 expression in A549 cell lysate.

Note

For research use only.