

Product Name: KIFAP3 (10A15) Rabbit Monoclonal Antibody
Catalog #: AMRe13020



Summary

Production Name	KIFAP3 (10A15) Rabbit Monoclonal Antibody
Description	Rabbit Monoclonal Antibody
Host	Rabbit
Application	WB,ELISA
Reactivity	Human,Mouse,Rat

Performance

Conjugation	Unconjugated
Modification	Unmodified
Isotype	IgG
Clonality	Monoclonal
Form	Liquid
Storage	Store at 4°C short term. Aliquot and store at -20°C long term. Avoid freeze/thaw cycles.
Buffer	Rabbit IgG in phosphate buffered saline , pH 7.4, 150mM NaCl, 0.02% New type preservative N and 50% glycerol. Store at +4°C short term. Store at -20°C long term. Avoid freeze / thaw cycle.
Purification	Affinity purification

Immunogen

Gene Name	KIFAP3
Alternative Names	KAP3; KIF3AP; Kifap3; Kinesin associated protein 3; SMAP;
Gene ID	22920.0
SwissProt ID	Q92845.

Application

Dilution Ratio	WB 1:500-1:2000
Molecular Weight	91kDa

Product Name: KIFAP3 (10A15) Rabbit Monoclonal Antibody
Catalog #: AMRe13020

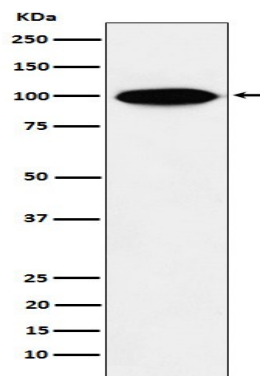


Background

Involved in tethering the chromosomes to the spindle pole and in chromosome movement. Binds to the tail domain of the KIF3A/KIF3B heterodimer to form a heterotrimeric KIF3 complex and may regulate the membrane binding of this complex. Involved in tethering the chromosomes to the spindle pole and in chromosome movement. Binds to the tail domain of the KIF3A/KIF3B heterodimer to form a heterotrimeric KIF3 complex and may regulate the membrane binding of this complex (By similarity).

Research Area

Image Data



Western blot analysis of KIFAP3 expression in HeLa cell lysate.

Note

For research use only.