

Product Name: Involucrin (10K9) Rabbit Monoclonal Antibody
Catalog #: AMRe12690



Summary

| | |
|------------------------|--|
| Production Name | Involucrin (10K9) Rabbit Monoclonal Antibody |
| Description | Rabbit Monoclonal Antibody |
| Host | Rabbit |
| Application | WB,ELISA |
| Reactivity | Human,Rat |

Performance

| | |
|---------------------|--|
| Conjugation | Unconjugated |
| Modification | Unmodified |
| Isotype | IgG |
| Clonality | Monoclonal |
| Form | Liquid |
| Storage | Store at 4°C short term. Aliquot and store at -20°C long term. Avoid freeze/thaw cycles. |
| Buffer | Rabbit IgG in phosphate buffered saline , pH 7.4, 150mM NaCl, 0.02% New type preservative N and 50% glycerol. Store at +4°C short term. Store at -20°C long term. Avoid freeze / thaw cycle. |
| Purification | Affinity purification |

Immunogen

| | |
|--------------------------|------------------|
| Gene Name | IVL |
| Alternative Names | Involucrin; IVL; |
| Gene ID | 3713.0 |
| SwissProt ID | P07476. |

Application

| | |
|-------------------------|------------------|
| Dilution Ratio | WB 1:1000-1:5000 |
| Molecular Weight | 68kDa |

Product Name: Involucrin (10K9) Rabbit Monoclonal Antibody
Catalog #: AMRe12690

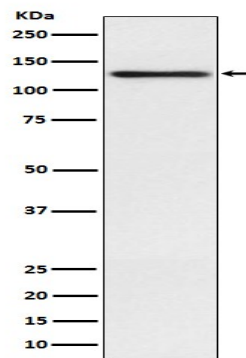


Background

Part of the insoluble cornified cell envelope (CE) of stratified squamous epithelia. Part of the insoluble cornified cell envelope (CE) of stratified squamous epithelia.

Research Area

Image Data



Western blot analysis of Involucrin expression in A431 cell lysate.

Note

For research use only.