

**Product Name: IGFBP1 (14E18) Rabbit Monoclonal Antibody**  
**Catalog #: AMRe12427**



## Summary

<b>Production Name</b>	IGFBP1 (14E18) Rabbit Monoclonal Antibody
<b>Description</b>	Rabbit Monoclonal Antibody
<b>Host</b>	Rabbit
<b>Application</b>	WB,ELISA
<b>Reactivity</b>	Human,Mouse,Rat

## Performance

<b>Conjugation</b>	Unconjugated
<b>Modification</b>	Unmodified
<b>Isotype</b>	IgG
<b>Clonality</b>	Monoclonal
<b>Form</b>	Liquid
<b>Storage</b>	Store at 4°C short term. Aliquot and store at -20°C long term. Avoid freeze/thaw cycles.
<b>Buffer</b>	Rabbit IgG in phosphate buffered saline , pH 7.4, 150mM NaCl, 0.02% New type preservative N and 50% glycerol. Store at +4°C short term. Store at -20°C long term. Avoid freeze / thaw cycle.
<b>Purification</b>	Affinity purification

## Immunogen

<b>Gene Name</b>	IGFBP1
<b>Alternative Names</b>	AFBP; IBP1; PP12; IGF-BP25; hIGFBP-1;
<b>Gene ID</b>	3484.0
<b>SwissProt ID</b>	P08833.

## Application

<b>Dilution Ratio</b>	WB 1:500-1:2000
<b>Molecular Weight</b>	28kDa

**Product Name: IGFBP1 (14E18) Rabbit Monoclonal Antibody**  
**Catalog #: AMRe12427**



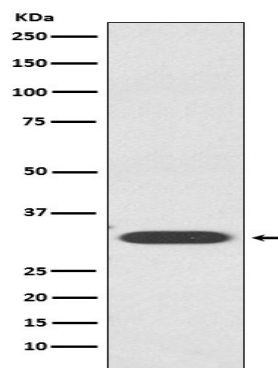
---

## Background

IGF-binding proteins prolong the half-life of the IGFs and have been shown to either inhibit or stimulate the growth promoting effects of the IGFs on cell culture. They alter the interaction of IGFs with their cell surface receptors. Promotes cell migration. IGF-binding proteins prolong the half-life of the IGFs and have been shown to either inhibit or stimulate the growth promoting effects of the IGFs on cell culture. They alter the interaction of IGFs with their cell surface receptors. Promotes cell migration.

## Research Area

## Image Data



Western blot analysis of IGFBP1 expression in HepG2 cell lysate.

## Note

For research use only.