

Product Name: HSD11B1 (17P16) Rabbit Monoclonal Antibody
Catalog #: AMRe12219



Summary

Production Name	HSD11B1 (17P16) Rabbit Monoclonal Antibody
Description	Rabbit Monoclonal Antibody
Host	Rabbit
Application	WB,ELISA
Reactivity	Human,Mouse,Rat

Performance

Conjugation	Unconjugated
Modification	Unmodified
Isotype	IgG
Clonality	Monoclonal
Form	Liquid
Storage	Store at 4°C short term. Aliquot and store at -20°C long term. Avoid freeze/thaw cycles.
Buffer	Rabbit IgG in phosphate buffered saline , pH 7.4, 150mM NaCl, 0.02% New type preservative N and 50% glycerol. Store at +4°C short term. Store at -20°C long term. Avoid freeze / thaw cycle.
Purification	Affinity purification

Immunogen

Gene Name	HSD11B1
Alternative Names	11-DH; 11-beta-HSD1; HSD11B1; HSD11; HSD11L; 11 beta HSD1;
Gene ID	3290.0
SwissProt ID	P28845.

Application

Dilution Ratio	WB 1:500-1:2000
Molecular Weight	32kDa

Product Name: HSD11B1 (17P16) Rabbit Monoclonal Antibody
Catalog #: AMRe12219

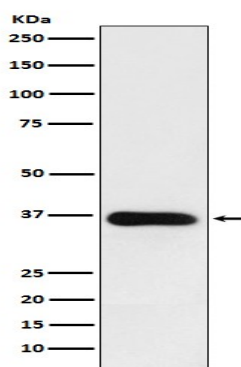


Background

Catalyzes reversibly the conversion of cortisol to the inactive metabolite cortisone. Catalyzes reversibly the conversion of 7-ketocholesterol to 7-beta-hydroxycholesterol. In intact cells, the reaction runs only in one direction, from 7-ketocholesterol to 7-beta-hydroxycholesterol. Catalyzes reversibly the conversion of cortisol to the inactive metabolite cortisone (PubMed: [10497248](http://www.uniprot.org/citations/10497248)). Catalyzes reversibly the conversion of 7-ketocholesterol to 7-beta-hydroxycholesterol. In intact cells, the reaction runs only in one direction, from 7-ketocholesterol to 7-beta-hydroxycholesterol (By similarity).

Research Area

Image Data



Western blot analysis of HSD11B1 expression in human fetal liver lysate.

Note

For research use only.