

Product Name: HLA-DRA (4K6) Rabbit Monoclonal Antibody
Catalog #: AMRe12087



Summary

Production Name	HLA-DRA (4K6) Rabbit Monoclonal Antibody
Description	Rabbit Monoclonal Antibody
Host	Rabbit
Application	WB,ELISA
Reactivity	Human

Performance

Conjugation	Unconjugated
Modification	Unmodified
Isotype	IgG
Clonality	Monoclonal
Form	Liquid
Storage	Store at 4°C short term. Aliquot and store at -20°C long term. Avoid freeze/thaw cycles.
Buffer	Rabbit IgG in phosphate buffered saline , pH 7.4, 150mM NaCl, 0.02% New type preservative N and 50% glycerol. Store at +4°C short term. Store at -20°C long term. Avoid freeze / thaw cycle.
Purification	Affinity purification

Immunogen

Gene Name	HLA-DRA
Alternative Names	HLA-DR; MLRW; HLA-DRA1; MHC class II antigen DRA; HLA class II histocompatibility antigen, DR alpha chain; HLA DRB1; DRA;
Gene ID	3122.0
SwissProt ID	P01903.

Application

Dilution Ratio	WB 1:1000-1:5000
Molecular Weight	29kDa

Product Name: HLA-DRA (4K6) Rabbit Monoclonal Antibody
Catalog #: AMRe12087



Background

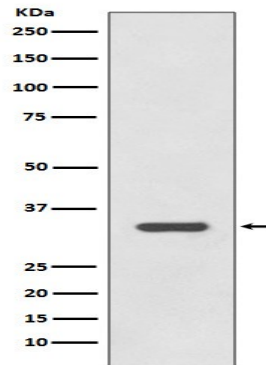
HLA-DRA is one of the HLA class II alpha chain paralogues. This class II molecule is a heterodimer consisting of an alpha and a beta chain, both anchored in the membrane. It plays a central role in the immune system by presenting peptides derived from extracellular proteins. Class II molecules are expressed in antigen presenting cells (APC: B lymphocytes, dendritic cells, macrophages). An alpha chain of antigen-presenting major histocompatibility complex class II (MHCII) molecule. In complex with the beta chain HLA- DRB, displays antigenic peptides on professional antigen presenting cells (APCs) for recognition by alpha-beta T cell receptor (TCR) on HLA-DR-restricted CD4-positive T cells. This guides antigen-specific T- helper effector functions, both antibody-mediated immune response and macrophage activation, to ultimately eliminate the infectious agents and transformed cells (PubMed:29884618, PubMed:17334368, PubMed:8145819, PubMed:15322540, PubMed:22327072, PubMed:27591323, PubMed:31495665, PubMed:15265931, PubMed:9075930, PubMed:24190431). Typically presents extracellular peptide antigens of 10 to 30 amino acids that arise from proteolysis of endocytosed antigens in lysosomes (PubMed:8145819). In the tumor microenvironment, presents antigenic peptides that are primarily generated in tumor-resident APCs likely via phagocytosis of apoptotic tumor cells or macropinocytosis of secreted tumor proteins (PubMed:31495665). Presents peptides derived from intracellular proteins that are trapped in autolysosomes after macroautophagy, a mechanism especially relevant for T cell selection in the thymus and central immune tolerance (PubMed:17182262, PubMed:23783831). The selection of the immunodominant epitopes follows two processing modes: 'bind first, cut/trim later' for pathogen-derived antigenic peptides and 'cut first, bind later' for autoantigens/self- peptides (PubMed:25413013). The anchor residue at position 1 of the peptide N-terminus, usually a large hydrophobic residue, is essential for high affinity interaction with MHCII molecules (PubMed:8145819).

Research Area

Product Name: HLA-DRA (4K6) Rabbit Monoclonal Antibody
Catalog #: AMRe12087



Image Data



Western blot analysis of HLA-DRA expression in Raji cell lysate.

Note

For research use only.