

**Product Name: HIF Prolyl Hydroxylases (11V1) Rabbit
Monoclonal Antibody
Catalog #: AMRe12016**



Summary

Production Name	HIF Prolyl Hydroxylases (11V1) Rabbit Monoclonal Antibody
Description	Rabbit Monoclonal Antibody
Host	Rabbit
Application	WB
Reactivity	Human

Performance

Conjugation	Unconjugated
Modification	Unmodified
Isotype	IgG
Clonality	Monoclonal
Form	Liquid
Storage	Store at 4°C short term. Aliquot and store at -20°C long term. Avoid freeze/thaw cycles.
Buffer	Supplied in 50mM Tris-Glycine(pH 7.4), 0.15M NaCl, 40%Glycerol, 0.01% New type preservative N and 0.05% BSA.
Purification	Affinity purification

Immunogen

Gene Name	P4HTM EGLN4 ; HIFPH4; Hypoxia inducible factor prolyl 4 hydroxylase; P4H with
Alternative Names	transmembrane domain; P4htm; PH4; PHD4; Proline 4 hydroxylase; Prolyl hydroxylase domain containing 4;
Gene ID	54681.0
SwissProt ID	Q9NXG6.A synthetic peptide of human HIF Prolyl Hydroxylases

Application

Dilution Ratio	WB: 1:1000
Molecular Weight	57kDa

**Product Name: HIF Prolyl Hydroxylases (11V1) Rabbit
Monoclonal Antibody
Catalog #: AMRe12016**

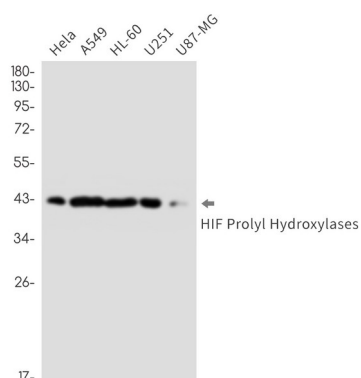


Background

Catalyzes the post-translational formation of 4-hydroxyproline in hypoxia-inducible factor (HIF) alpha proteins. Hydroxylates HIF1A at 'Pro-402' and 'Pro-564'. May function as a cellular oxygen sensor and, under normoxic conditions, may target HIF through the hydroxylation for proteasomal degradation via the von Hippel-Lindau ubiquitination complex. Catalyzes the post-translational formation of 4- hydroxyproline in hypoxia-inducible factor (HIF) alpha proteins. Hydroxylates HIF1A at 'Pro-402' and 'Pro-564'. May function as a cellular oxygen sensor and, under normoxic conditions, may target HIF through the hydroxylation for proteasomal degradation via the von Hippel-Lindau ubiquitination complex.

Research Area

Image Data



Western blot detection of HIF Prolyl Hydroxylases in HeLa,A549,HL-60,U251,U87-MG cell lysates using HIF Prolyl Hydroxylases antibody(1:1000 diluted).

Note

For research use only.