

Product Name: Haptoglobin (11E4) Rabbit Monoclonal Antibody
Catalog #: AMRe11898



Summary

Production Name	Haptoglobin (11E4) Rabbit Monoclonal Antibody
Description	Rabbit Monoclonal Antibody
Host	Rabbit
Application	WB
Reactivity	Human,Mouse,Rat

Performance

Conjugation	Unconjugated
Modification	Unmodified
Isotype	IgG
Clonality	Monoclonal
Form	Liquid
Storage	Store at 4°C short term. Aliquot and store at -20°C long term. Avoid freeze/thaw cycles.
Buffer	Supplied in 50mM Tris-Glycine(pH 7.4), 0.15M NaCl, 40%Glycerol, 0.01% New type preservative N and 0.05% BSA.
Purification	Affinity purification

Immunogen

Gene Name	HP
Alternative Names	Binding peptide; Haptoglobin alpha chain; Haptoglobin beta chain; HP2ALPHA2; HPA1S; Zonulin;
Gene ID	3240.0
SwissProt ID	P00738.Recombinant protein of human Haptoglobin

Application

Dilution Ratio	WB: 1:1000
Molecular Weight	39kDa

Product Name: Haptoglobin (11E4) Rabbit Monoclonal Antibody
Catalog #: AMRe11898

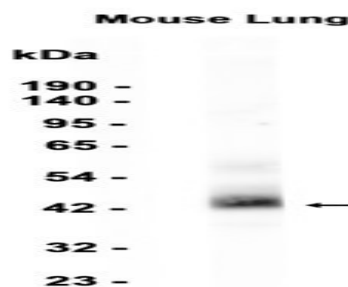


Background

Hemoglobin/haptoglobin complexes are rapidly cleared by the macrophage CD163 scavenger receptor expressed on the surface of liver Kupfer cells through an endocytic lysosomal degradation pathway. Uncleaved haptoglobin, also known as zonulin, plays a role in intestinal permeability, allowing intercellular tight junction disassembly, and controlling the equilibrium between tolerance and immunity to non-self antigens. As a result of hemolysis, hemoglobin is found to accumulate in the kidney and is secreted in the urine. Haptoglobin captures, and combines with free plasma hemoglobin to allow hepatic recycling of heme iron and to prevent kidney damage. Haptoglobin also acts as an antioxidant, has antibacterial activity, and plays a role in modulating many aspects of the acute phase response. Hemoglobin/haptoglobin complexes are rapidly cleared by the macrophage CD163 scavenger receptor expressed on the surface of liver Kupfer cells through an endocytic lysosomal degradation pathway.

Research Area

Image Data



Western blot analysis of extracts from Mouse lung tissue using RM5147 at 1:1000.

Note

For research use only.