

**Product Name: GTPase HRAS (1G13) Rabbit Monoclonal Antibody**  
**Catalog #: AMRe11844**



## Summary

<b>Production Name</b>	GTPase HRAS (1G13) Rabbit Monoclonal Antibody
<b>Description</b>	Rabbit Monoclonal Antibody
<b>Host</b>	Rabbit
<b>Application</b>	WB,ELISA
<b>Reactivity</b>	Human,Mouse,Rat

## Performance

<b>Conjugation</b>	Unconjugated
<b>Modification</b>	Unmodified
<b>Isotype</b>	IgG
<b>Clonality</b>	Monoclonal
<b>Form</b>	Liquid
<b>Storage</b>	Store at 4°C short term. Aliquot and store at -20°C long term. Avoid freeze/thaw cycles.
<b>Buffer</b>	Rabbit IgG in phosphate buffered saline , pH 7.4, 150mM NaCl, 0.02% New type preservative N and 50% glycerol. Store at +4°C short term. Store at -20°C long term. Avoid freeze / thaw cycle.
<b>Purification</b>	Affinity purification

## Immunogen

<b>Gene Name</b>	HRAS GTPase HRas; H-Ras-1; Ha-Ras; Transforming protein p21; c-H-ras; p21ras; HRAS;
<b>Alternative Names</b>	HRAS1; GTPase NRas; Transforming protein N-Ras; NRAS; HRAS1; GTPase KRas; K-Ras 2; Ki-Ras; c-K-ras; c-Ki-ras; GTPase KRas; KRAS; KRAS2, RASK2
<b>Gene ID</b>	3265.0
<b>SwissProt ID</b>	P01112.

## Application

<b>Dilution Ratio</b>	WB 1:500-1:2000
<b>Molecular Weight</b>	21kDa

**Product Name: GTPase HRAS (1G13) Rabbit Monoclonal Antibody**  
**Catalog #: AMRe11844**

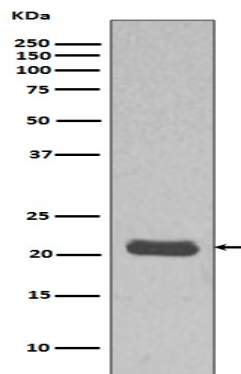


## Background

The KRAS gene encodes the human cellular homolog of a transforming gene isolated from the Kirsten rat sarcoma virus. The RAS proteins are GDP/GTP-binding proteins that act as intracellular signal transducers. The most well-studied members of the RAS (derived from 'Rat Sarcoma' virus) gene family include KRAS, HRAS, and NRAS. These genes encode immunologically related proteins with a molecular mass of 21 kD and are homologs of rodent sarcoma virus genes that have transforming abilities. Involved in the activation of Ras protein signal transduction (PubMed:<a href="http://www.uniprot.org/citations/22821884" target="\_blank">22821884</a>). Ras proteins bind GDP/GTP and possess intrinsic GTPase activity (PubMed:<a href="http://www.uniprot.org/citations/12740440" target="\_blank">12740440</a>, PubMed:<a href="http://www.uniprot.org/citations/14500341" target="\_blank">14500341</a>, PubMed:<a href="http://www.uniprot.org/citations/9020151" target="\_blank">9020151</a>).

## Research Area

## Image Data



Western blot analysis MCF7 cell lysate using HRAS Antibody.

## Note

For research use only.