

Product Name: Growth hormone receptor (16L4) Rabbit Monoclonal Antibody
Catalog #: AMRe11787

Summary

| | |
|------------------------|---|
| Production Name | Growth hormone receptor (16L4) Rabbit Monoclonal Antibody |
| Description | Rabbit Monoclonal Antibody |
| Host | Rabbit |
| Application | WB |
| Reactivity | Human,Mouse,Rat |

Performance

| | |
|---------------------|--|
| Conjugation | Unconjugated |
| Modification | Unmodified |
| Isotype | IgG |
| Clonality | Monoclonal |
| Form | Liquid |
| Storage | Store at 4°C short term. Aliquot and store at -20°C long term. Avoid freeze/thaw cycles. |
| Buffer | Supplied in 50mM Tris-Glycine(pH 7.4), 0.15M NaCl, 40%Glycerol, 0.01% New type preservative N and 0.05% BSA. |
| Purification | Affinity purification |

Immunogen

| | |
|--------------------------|--|
| Gene Name | GHR |
| Alternative Names | GH-binding protein; GHBP; GHR; Serum binding protein; Somatotropin receptor; |
| Gene ID | 2690.0 |
| SwissProt ID | P10912.A synthetic peptide of human Growth hormone receptor |

Application

| | |
|-------------------------|-------------------|
| Dilution Ratio | WB: 1:1000-1:5000 |
| Molecular Weight | 72kDa |

Background

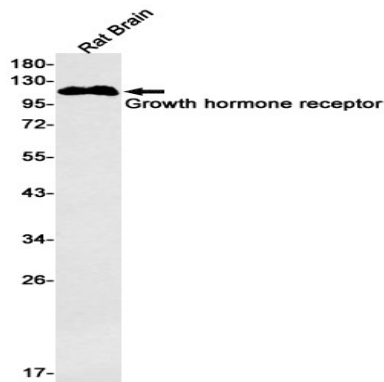
**Product Name: Growth hormone receptor (16L4) Rabbit
Monoclonal Antibody
Catalog #: AMRe11787**

Receptor for pituitary gland growth hormone involved in regulating postnatal body growth. On ligand binding, couples to the JAK2/STAT5 pathway. The soluble form (GHBP) acts as a reservoir of growth hormone in plasma and may be a modulator/inhibitor of GH signaling.

Isoform 2 up-regulates the production of GHBP and acts as a negative inhibitor of GH signaling. Receptor for pituitary gland growth hormone involved in regulating postnatal body growth. On ligand binding, couples to the JAK2/STAT5 pathway (By similarity). Isoform 2 up-regulates the production of GHBP and acts as a negative inhibitor of GH signaling.

Research Area

Image Data



Western blot detection of Growth hormone receptor in Rat Brain lysates using Growth hormone receptor antibody(1:500 diluted).

Note

For research use only.