

**Product Name: Growth Hormone (12Z11) Rabbit
Monoclonal Antibody
Catalog #: AMRe11786**

Summary

Production Name	Growth Hormone (12Z11) Rabbit Monoclonal Antibody
Description	Rabbit Monoclonal Antibody
Host	Rabbit
Application	WB,ELISA
Reactivity	Human

Performance

Conjugation	Unconjugated
Modification	Unmodified
Isotype	IgG
Clonality	Monoclonal
Form	Liquid
Storage	Store at 4°C short term. Aliquot and store at -20°C long term. Avoid freeze/thaw cycles.
Buffer	Rabbit IgG in phosphate buffered saline , pH 7.4, 150mM NaCl, 0.02% New type preservative N and 50% glycerol. Store at +4°C short term. Store at -20°C long term. Avoid freeze / thaw cycle.
Purification	Affinity purification

Immunogen

Gene Name	GH1
Alternative Names	GH1; GHN; Growth hormone 1; hGH-N; IGHD1B; Pituitary growth hormone; RNGHGP; Somatotropin;
Gene ID	2688.0
SwissProt ID	P01241.

Application

Dilution Ratio	WB 1:500-1:2000
Molecular Weight	25kDa

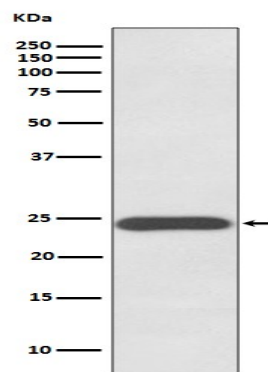
**Product Name: Growth Hormone (12Z11) Rabbit
Monoclonal Antibody
Catalog #: AMRe11786**

Background

Plays an important role in growth control. Its major role in stimulating body growth is to stimulate the liver and other tissues to secrete IGF-1. It stimulates both the differentiation and proliferation of myoblasts. It also stimulates amino acid uptake and protein synthesis in muscle and other tissues. Plays an important role in growth control. Its major role in stimulating body growth is to stimulate the liver and other tissues to secrete IGF-1. It stimulates both the differentiation and proliferation of myoblasts. It also stimulates amino acid uptake and protein synthesis in muscle and other tissues.

Research Area

Image Data



Western blot analysis of Growth Hormone expression in human placenta lysate.

Note

For research use only.