

Product Name: GRK6 (17B2) Rabbit Monoclonal Antibody
Catalog #: AMRe11782

Summary

Production Name	GRK6 (17B2) Rabbit Monoclonal Antibody
Description	Rabbit Monoclonal Antibody
Host	Rabbit
Application	WB,ELISA
Reactivity	Human,Mouse

Performance

Conjugation	Unconjugated
Modification	Unmodified
Isotype	IgG
Clonality	Monoclonal
Form	Liquid
Storage	Store at 4°C short term. Aliquot and store at -20°C long term. Avoid freeze/thaw cycles.
Buffer	Rabbit IgG in phosphate buffered saline , pH 7.4, 150mM NaCl, 0.02% New type preservative N and 50% glycerol. Store at +4°C short term. Store at -20°C long term. Avoid freeze / thaw cycle.
Purification	Affinity purification

Immunogen

Gene Name	GRK6
Alternative Names	G protein coupled receptor kinase 6; G protein coupled receptor kinase GRK6; G protein-coupled receptor kinase 6; Gprk6; Grk6;
Gene ID	2870.0
SwissProt ID	P43250.

Application

Dilution Ratio	WB 1:500-1:2000
Molecular Weight	66kDa

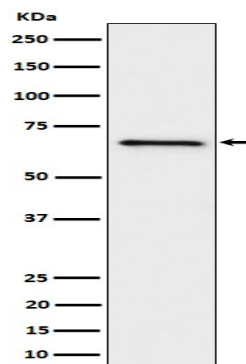
Product Name: GRK6 (17B2) Rabbit Monoclonal Antibody
Catalog #: AMRe11782

Background

Specifically phosphorylates the activated forms of G protein-coupled receptors. Specifically phosphorylates the activated forms of G protein-coupled receptors. Such receptor phosphorylation initiates beta-arrestin-mediated receptor desensitization, internalization, and signaling events leading to their desensitization. Seems to be involved in the desensitization of D2-like dopamine receptors in striatum and chemokine receptor CXCR4 which is critical for CXCL12-induced cell chemotaxis (By similarity). Phosphorylates rhodopsin (RHO) (in vitro) and a non G-protein-coupled receptor: LRP6 during Wnt signaling (in vitro).

Research Area

Image Data



Western blot analysis of GRK6 expression in Ramos cell lysate.

Note

For research use only.