

Summary

Production Name	GRB7 (4L2) Rabbit Monoclonal Antibody
Description	Rabbit Monoclonal Antibody
Host	Rabbit
Application	WB,ELISA
Reactivity	Human,Mouse,Rat

Performance

Conjugation	Unconjugated
Modification	Unmodified
Isotype	IgG
Clonality	Monoclonal
Form	Liquid
Storage	Store at 4°C short term. Aliquot and store at -20°C long term. Avoid freeze/thaw cycles.
Buffer	Rabbit IgG in phosphate buffered saline , pH 7.4, 150mM NaCl, 0.02% New type preservative N and 50% glycerol. Store at +4°C short term. Store at -20°C long term. Avoid freeze / thaw cycle.
Purification	Affinity purification

Immunogen

Gene Name	GRB7
Alternative Names	B47; Epidermal growth factor receptor GRB 7; GRB7 adapter protein; GRB7;
Gene ID	2886.0
SwissProt ID	Q14451.

Application

Dilution Ratio	WB 1:1000-1:5000
Molecular Weight	60kDa

Background

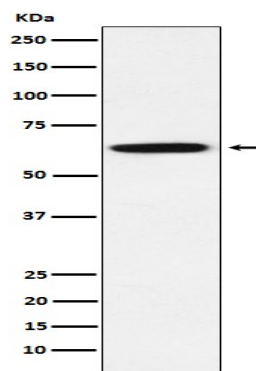
Product Name: GRB7 (4L2) Rabbit Monoclonal Antibody
Catalog #: AMRe11753



Interacts with the cytoplasmic domain of the epidermal growth factor receptor which is then inhibited. The interaction is mediated by the SH2 domain. Also binds to ERBB2. Adapter protein that interacts with the cytoplasmic domain of numerous receptor kinases and modulates down-stream signaling. Promotes activation of down-stream protein kinases, including STAT3, AKT1, MAPK1 and/or MAPK3. Promotes activation of HRAS. Plays a role in signal transduction in response to EGF. Plays a role in the regulation of cell proliferation and cell migration. Plays a role in the assembly and stability of RNA stress granules. Binds to the 5'UTR of target mRNA molecules and represses translation of target mRNA species, when not phosphorylated. Phosphorylation impairs RNA binding and promotes stress granule disassembly during recovery after cellular stress (By similarity).

Research Area

Image Data



Western blot analysis of GRB7 expression in A431 cell lysate.

Note

For research use only.