

Product Name: GRB2 (19X8) Rabbit Monoclonal Antibody
Catalog #: AMRe11750

Summary

| | |
|------------------------|--|
| Production Name | GRB2 (19X8) Rabbit Monoclonal Antibody |
| Description | Rabbit Monoclonal Antibody |
| Host | Rabbit |
| Application | WB,ELISA |
| Reactivity | Human,Mouse,Rat |

Performance

| | |
|---------------------|--|
| Conjugation | Unconjugated |
| Modification | Unmodified |
| Isotype | IgG |
| Clonality | Monoclonal |
| Form | Liquid |
| Storage | Store at 4°C short term. Aliquot and store at -20°C long term. Avoid freeze/thaw cycles. |
| Buffer | Rabbit IgG in phosphate buffered saline , pH 7.4, 150mM NaCl, 0.02% New type preservative N and 50% glycerol. Store at +4°C short term. Store at -20°C long term. Avoid freeze / thaw cycle. |
| Purification | Affinity purification |

Immunogen

| | |
|--------------------------|--|
| Gene Name | GRB2 |
| Alternative Names | ASH; Grb2; Grb3 3; HT027; NCKAP2; Protein ash; SEM5; |
| Gene ID | 2885.0 |
| SwissProt ID | P62993. |

Application

| | |
|-------------------------|-----------------|
| Dilution Ratio | WB 1:500-1:2000 |
| Molecular Weight | 25kDa |

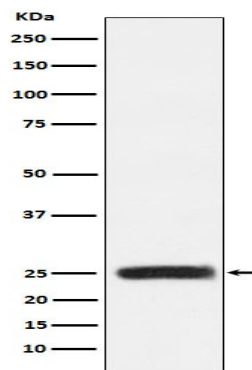
Product Name: GRB2 (19X8) Rabbit Monoclonal Antibody
Catalog #: AMRe11750

Background

Adapter protein that provides a critical link between cell surface growth factor receptors and the Ras signaling pathway.
Adapter protein that provides a critical link between cell surface growth factor receptors and the Ras signaling pathway.

Research Area

Image Data



Western blot analysis of GRB2 expression in HEK293 cell lysate.

Note

For research use only.