

Product Name: GRAF (2M19) Rabbit Monoclonal Antibody
Catalog #: AMRe11734

Summary

Production Name	GRAF (2M19) Rabbit Monoclonal Antibody
Description	Rabbit Monoclonal Antibody
Host	Rabbit
Application	WB,ELISA
Reactivity	Human,Mouse,Rat

Performance

Conjugation	Unconjugated
Modification	Unmodified
Isotype	IgG
Clonality	Monoclonal
Form	Liquid
Storage	Store at 4°C short term. Aliquot and store at -20°C long term. Avoid freeze/thaw cycles.
Buffer	Rabbit IgG in phosphate buffered saline , pH 7.4, 150mM NaCl, 0.02% New type preservative N and 50% glycerol. Store at +4°C short term. Store at -20°C long term. Avoid freeze / thaw cycle.
Purification	Affinity purification

Immunogen

Gene Name	ARHGAP26
Alternative Names	GRAF; GRAF1; OPHN1L; OPHN1L1;
Gene ID	23092.0
SwissProt ID	Q9UNA1.

Application

Dilution Ratio	WB 1:500-1:2000
Molecular Weight	92kDa

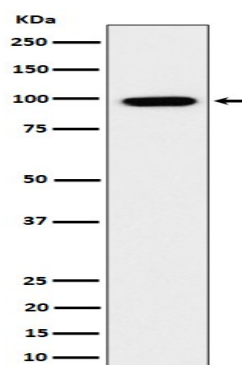
Product Name: GRAF (2M19) Rabbit Monoclonal Antibody
Catalog #: AMRe11734

Background

GTPase-activating protein for RHOA and CDC42. GTPase-activating protein for RHOA and CDC42.

Research Area

Image Data



Western blot analysis of GRAF expression in HeLa cell lysate.

Note

For research use only.