

Product Name: GPCR / LGR6 (5S15) Rabbit Monoclonal Antibody
Catalog #: AMRe11606



Summary

Production Name	GPCR / LGR6 (5S15) Rabbit Monoclonal Antibody
Description	Rabbit Monoclonal Antibody
Host	Rabbit
Application	WB
Reactivity	Human,Mouse,Rat

Performance

Conjugation	Unconjugated
Modification	Unmodified
Isotype	IgG
Clonality	Monoclonal
Form	Liquid
Storage	Store at 4°C short term. Aliquot and store at -20°C long term. Avoid freeze/thaw cycles.
Buffer	Supplied in 50mM Tris-Glycine(pH 7.4), 0.15M NaCl, 40%Glycerol, 0.01% New type preservative N and 0.05% BSA.
Purification	Affinity purification

Immunogen

Gene Name	LGR6
Alternative Names	GPCR; Lgr6;
Gene ID	59352.0
SwissProt ID	Q9HBX8.A synthetic peptide of human GPCR LGR6

Application

Dilution Ratio	WB: 1:1000
Molecular Weight	104kDa

Background

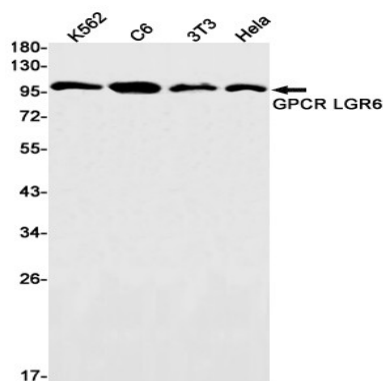
Product Name: GPCR / LGR6 (5S15) Rabbit Monoclonal Antibody
Catalog #: AMRe11606



Orphan receptor. Receptor for R-spondins that potentiates the canonical Wnt signaling pathway and acts as a marker of multipotent stem cells in the epidermis. Upon binding to R-spondins (RSPO1, RSPO2, RSPO3 or RSPO4), associates with phosphorylated LRP6 and frizzled receptors that are activated by extracellular Wnt receptors, triggering the canonical Wnt signaling pathway to increase expression of target genes. In contrast to classical G-protein coupled receptors, does not activate heterotrimeric G-proteins to transduce the signal. May act as a tumor suppressor.

Research Area

Image Data



Western blot detection of GPCR LGR6 in K562,C6,3T3,HeLa cell lysates using GPCR LGR6 antibody(1:1000 diluted).

Note

For research use only.