

Product Name: Glyt2 (2R1) Rabbit Monoclonal Antibody
Catalog #: AMRe11526



Summary

Production Name	Glyt2 (2R1) Rabbit Monoclonal Antibody
Description	Rabbit Monoclonal Antibody
Host	Rabbit
Application	WB
Reactivity	Human,Mouse,Rat

Performance

Conjugation	Unconjugated
Modification	Unmodified
Isotype	IgG
Clonality	Monoclonal
Form	Liquid
Storage	Store at 4°C short term. Aliquot and store at -20°C long term. Avoid freeze/thaw cycles.
Buffer	Supplied in 50mM Tris-Glycine(pH 7.4), 0.15M NaCl, 40%Glycerol, 0.01% New type preservative N and 0.05% BSA.
Purification	Affinity purification

Immunogen

Gene Name	SLC6A5
Alternative Names	Glycine transporter; GlyT2; NET1; SC6AC5; Slc6a5; Slc6a9;
Gene ID	9152.0
SwissProt ID	Q9Y345.A synthetic peptide of human Glyt2

Application

Dilution Ratio	WB: 1:1000
Molecular Weight	87kDa

Background

Terminates the action of glycine by its high affinity sodium-dependent reuptake into presynaptic terminals. May be

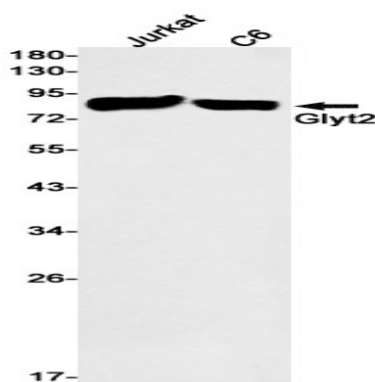
Product Name: Glyt2 (2R1) Rabbit Monoclonal Antibody
Catalog #: AMRe11526



responsible for the termination of neurotransmission at strychnine-sensitive glycinergic synapses. Sodium- and chloride-dependent glycine transporter (PubMed:9845349, PubMed:10381548, PubMed:10606742, PubMed:31370103). Terminates the action of glycine by its high affinity sodium-dependent reuptake into presynaptic terminals (PubMed:9845349). May be responsible for the termination of neurotransmission at strychnine-sensitive glycinergic synapses (PubMed:9845349).

Research Area

Image Data



Western blot detection of Glyt2 in Jurkat,C6 cell lysates using Glyt2 antibody(1:1000 diluted).

Note

For research use only.