

Product Name: Glycophorin C (18Y1) Rabbit Monoclonal Antibody
Catalog #: AMRe11515

Summary

Production Name	Glycophorin C (18Y1) Rabbit Monoclonal Antibody
Description	Rabbit Monoclonal Antibody
Host	Rabbit
Application	WB
Reactivity	Human

Performance

Conjugation	Unconjugated
Modification	Unmodified
Isotype	IgG
Clonality	Monoclonal
Form	Liquid
Storage	Store at 4°C short term. Aliquot and store at -20°C long term. Avoid freeze/thaw cycles.
Buffer	Supplied in 50mM Tris-Glycine(pH 7.4), 0.15M NaCl, 40%Glycerol, 0.01% New type preservative N and 0.05% BSA.
Purification	Affinity purification

Immunogen

Gene Name	GYPC
Alternative Names	GYPC; CD236; CD236R; GE; GPC; GYPD;
Gene ID	2995.0
SwissProt ID	P04921.A synthetic peptide of human Glycophorin C

Application

Dilution Ratio	WB: 1:2000
Molecular Weight	14kDa

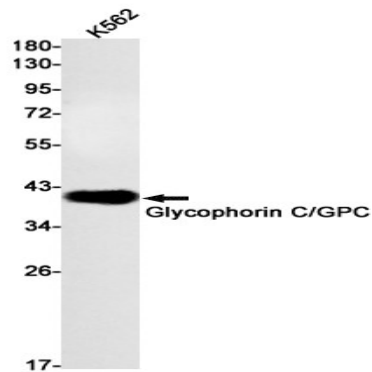
Background

Product Name: Glycophorin C (18Y1) Rabbit Monoclonal Antibody
Catalog #: AMRe11515

This protein is a minor sialoglycoprotein in human erythrocyte membranes. The blood group Gerbich antigens and receptors for Plasmodium falciparum merozoites are most likely located within the extracellular domain. This protein is a minor sialoglycoprotein in human erythrocyte membranes. The blood group Gerbich antigens and receptors for Plasmodium falciparum merozoites are most likely located within the extracellular domain. Glycophorin-C plays an important role in regulating the stability of red cells.

Research Area

Image Data



Western blot detection of Glycophorin C/GPC in K562 cell lysates using Glycophorin C/GPC antibody(1:1000 diluted).

Note

For research use only.