

Product Name: GLUT3 (15P13) Rabbit Monoclonal Antibody
Catalog #: AMRe11502



Summary

Production Name	GLUT3 (15P13) Rabbit Monoclonal Antibody
Description	Rabbit Monoclonal Antibody
Host	Rabbit
Application	WB
Reactivity	Human,Mouse,Rat

Performance

Conjugation	Unconjugated
Modification	Unmodified
Isotype	IgG
Clonality	Monoclonal
Form	Liquid
Storage	Store at 4°C short term. Aliquot and store at -20°C long term. Avoid freeze/thaw cycles.
Buffer	Supplied in 50mM Tris-Glycine(pH 7.4), 0.15M NaCl, 40%Glycerol, 0.01% New type preservative N and 0.05% BSA.
Purification	Affinity purification

Immunogen

Gene Name	SLC2A3
Alternative Names	brain; Glucose transporter type 3; GLUT3; Slc2a3;
Gene ID	6515.0
SwissProt ID	P11169.A synthetic peptide of human Glucose Transporter GLUT3

Application

Dilution Ratio	WB: 1:1000-1:5000
Molecular Weight	54kDa

Background

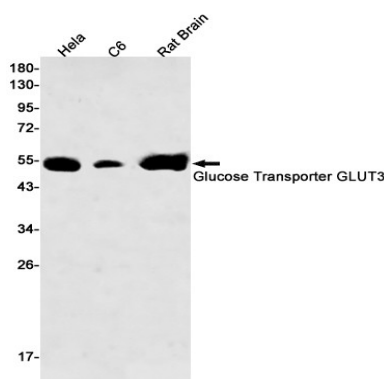
Product Name: GLUT3 (15P13) Rabbit Monoclonal Antibody
Catalog #: AMRe11502



Facilitative glucose transporter. Probably a neuronal glucose transporter. Facilitative glucose transporter that can also mediate the uptake of various other monosaccharides across the cell membrane (PubMed:9477959, PubMed:26176916). Mediates the uptake of glucose, 2-deoxyglucose, galactose, mannose, xylose and fucose, and probably also dehydroascorbate (PubMed:9477959, PubMed:26176916). Does not mediate fructose transport (PubMed:9477959, PubMed:26176916).

Research Area

Image Data



Western blot detection of Glucose Transporter GLUT3 in HeLa,C6,Rat Brain lysates using Glucose Transporter GLUT3 antibody(1:500 diluted).

Note

For research use only.