

**Product Name: G-CSF (11N11) Rabbit Monoclonal Antibody**  
**Catalog #: AMRe11370**



## Summary

|                        |  |
|------------------------|--|
| <b>Production Name</b> | G-CSF (11N11) Rabbit Monoclonal Antibody |
| <b>Description</b>     | Rabbit Monoclonal Antibody               |
| <b>Host</b>            | Rabbit                                   |
| <b>Application</b>     | WB,ELISA                                 |
| <b>Reactivity</b>      | Human,Mouse,Rat                          |

## Performance

|                     |  |
|---------------------|--|
| <b>Conjugation</b>  | Unconjugated   |
| <b>Modification</b> | Unmodified   |
| <b>Isotype</b>      | IgG  |
| <b>Clonality</b>    | Monoclonal   |
| <b>Form</b>         | Liquid   |
| <b>Storage</b>      | Store at 4°C short term. Aliquot and store at -20°C long term. Avoid freeze/thaw cycles.   |
| <b>Buffer</b>       | Rabbit IgG in phosphate buffered saline , pH 7.4, 150mM NaCl, 0.02% New type preservative N and 50% glycerol. Store at +4°C short term. Store at -20°C long term. Avoid freeze / thaw cycle. |
| <b>Purification</b> | Affinity purification  |

## Immunogen

|                          |   |
|--------------------------|---|
| <b>Gene Name</b>         | CSF3  |
| <b>Alternative Names</b> | CSF beta; CSF3; CSF3OS; Csf3; Filgrastim; G-CSF; GCSA; GCSF; MGI 2; Pluripoietin; |
| <b>Gene ID</b>           | 1440.0  |
| <b>SwissProt ID</b>      | P09919.   |

## Application

|                         |                 |
|-------------------------|-----------------|
| <b>Dilution Ratio</b>   | WB 1:500-1:2000 |
| <b>Molecular Weight</b> | 22kDa           |

**Product Name: G-CSF (11N11) Rabbit Monoclonal Antibody**  
**Catalog #: AMRe11370**

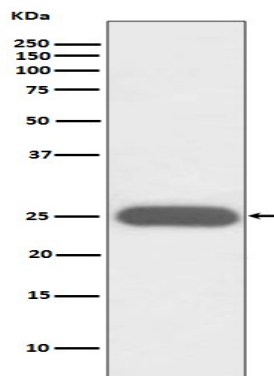
---

## Background

Granulocyte/macrophage colony-stimulating factors are cytokines that act in hematopoiesis by controlling the production, differentiation, and function of 2 related white cell populations of the blood, the granulocytes and the monocytes-macrophages. This CSF induces granulocytes. Granulocyte/macrophage colony-stimulating factors are cytokines that act in hematopoiesis by controlling the production, differentiation, and function of 2 related white cell populations of the blood, the granulocytes and the monocytes-macrophages. This CSF induces granulocytes.

## Research Area

## Image Data



Western blot analysis of G-CSF expression in K562 cell lysate.

## Note

For research use only.