

Product Name: FSH beta (5T6) Rabbit Monoclonal Antibody
Catalog #: AMRe11165



Summary

Production Name	FSH beta (5T6) Rabbit Monoclonal Antibody
Description	Rabbit Monoclonal Antibody
Host	Rabbit
Application	WB
Reactivity	Human

Performance

Conjugation	Unconjugated
Modification	Unmodified
Isotype	IgG
Clonality	Monoclonal
Form	Liquid
Storage	Store at 4°C short term. Aliquot and store at -20°C long term. Avoid freeze/thaw cycles.
Buffer	Rabbit IgG in phosphate buffered saline , pH 7.4, 150mM NaCl, 0.02% New type preservative N and 50% glycerol. Store at +4°C short term. Store at -20°C long term. Avoid freeze / thaw cycle.
Purification	Affinity purification

Immunogen

Gene Name	FSHB
Alternative Names	FSHB; FSHbeta;
Gene ID	2488.0
SwissProt ID	P01225.

Application

Dilution Ratio	WB 1:500-1:2000
Molecular Weight	15kDa

Product Name: FSH beta (5T6) Rabbit Monoclonal Antibody
Catalog #: AMRe11165

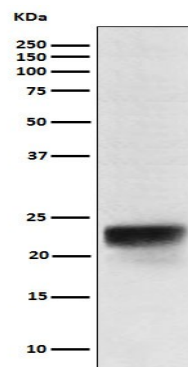


Background

Follicle stimulating hormone enables ovarian folliculogenesis to the antral follicle stage and is essential for Sertoli cell proliferation and maintenance of sperm quality in the testis. Together with the alpha chain CGA constitutes follitropin, the follicle-stimulating hormone, and provides its biological specificity to the hormone heterodimer. Binds FSHR, a G protein-coupled receptor, on target cells to activate downstream signaling pathways (PubMed: [2494176](http://www.uniprot.org/citations/2494176), PubMed: [24692546](http://www.uniprot.org/citations/24692546)). Follitropin is involved in follicle development and spermatogenesis in reproductive organs (PubMed: [407105](http://www.uniprot.org/citations/407105), PubMed: [8220432](http://www.uniprot.org/citations/8220432)).

Research Area

Image Data



Western blot analysis of FSH beta expression in Human pituitary lysate.

Note

For research use only.