

**Product Name: Fetuin B (15R6) Rabbit Monoclonal Antibody**  
**Catalog #: AMRe10911**



## Summary

<b>Production Name</b>	Fetuin B (15R6) Rabbit Monoclonal Antibody
<b>Description</b>	Rabbit Monoclonal Antibody
<b>Host</b>	Rabbit
<b>Application</b>	WB,ELISA
<b>Reactivity</b>	Human,Rat

## Performance

<b>Conjugation</b>	Unconjugated
<b>Modification</b>	Unmodified
<b>Isotype</b>	IgG
<b>Clonality</b>	Monoclonal
<b>Form</b>	Liquid
<b>Storage</b>	Store at 4°C short term. Aliquot and store at -20°C long term. Avoid freeze/thaw cycles.
<b>Buffer</b>	Rabbit IgG in phosphate buffered saline , pH 7.4, 150mM NaCl, 0.02% New type preservative N and 50% glycerol. Store at +4°C short term. Store at -20°C long term. Avoid freeze / thaw cycle.
<b>Purification</b>	Affinity purification

## Immunogen

<b>Gene Name</b>	FETUB
<b>Alternative Names</b>	Fet; Fetub; Fetuin beta; Gugu; Pp63;
<b>Gene ID</b>	26998.0
<b>SwissProt ID</b>	Q9UGM5.

## Application

<b>Dilution Ratio</b>	WB 1:500-1:2000
<b>Molecular Weight</b>	42kDa

**Product Name: Fetuin B (15R6) Rabbit Monoclonal Antibody**  
**Catalog #: AMRe10911**



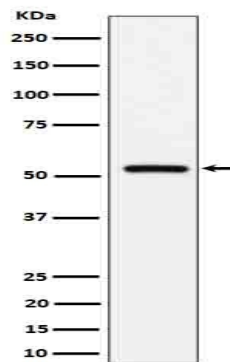
---

## Background

Protease inhibitor required for egg fertilization. Required to prevent premature zona pellucida hardening before fertilization, probably by inhibiting the protease activity of ASTL, a protease that mediates the cleavage of ZP2 and triggers zona pellucida hardening (By similarity). Protease inhibitor required for egg fertilization. Required to prevent premature zona pellucida hardening before fertilization, probably by inhibiting the protease activity of ASTL, a protease that mediates the cleavage of ZP2 and triggers zona pellucida hardening (By similarity).

## Research Area

## Image Data



Western blot analysis of Fetuin B expression in human serum cell lysate.

## Note

For research use only.