

**Product Name: Ferritin Light Chain (10S14) Rabbit
Monoclonal Antibody
Catalog #: AMRe10906**



Summary

Production Name	Ferritin Light Chain (10S14) Rabbit Monoclonal Antibody
Description	Rabbit Monoclonal Antibody
Host	Rabbit
Application	WB
Reactivity	Human

Performance

Conjugation	Unconjugated
Modification	Unmodified
Isotype	IgG
Clonality	Monoclonal
Form	Liquid
Storage	Store at 4°C short term. Aliquot and store at -20°C long term. Avoid freeze/thaw cycles.
Buffer	Supplied in 50mM Tris-Glycine(pH 7.4), 0.15M NaCl, 40%Glycerol, 0.01% New type preservative N and 0.05% BSA.
Purification	Affinity purification

Immunogen

Gene Name	FTL
Alternative Names	Ferritin L chain; Ferritin L subunit; Ferritin light chain; Ferritin light polypeptide; ferritin light polypeptide like 3; FTL; LFTD; NBIA 3;
Gene ID	2512.0
SwissProt ID	P02792.A synthetic peptide of human Ferritin light chain

Application

Dilution Ratio	WB: 1:1000
Molecular Weight	20kDa

**Product Name: Ferritin Light Chain (10S14) Rabbit
Monoclonal Antibody
Catalog #: AMRe10906**

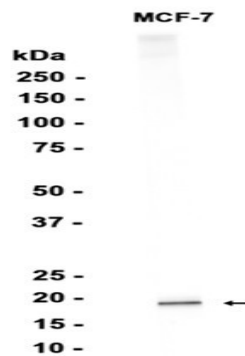


Background

Stores iron in a soluble, non-toxic, readily available form. Important for iron homeostasis. Iron is taken up in the ferrous form and deposited as ferric hydroxides after oxidation. Also plays a role in delivery of iron to cells. Mediates iron uptake in capsule cells of the developing kidney. Stores iron in a soluble, non-toxic, readily available form. Important for iron homeostasis. Iron is taken up in the ferrous form and deposited as ferric hydroxides after oxidation. Also plays a role in delivery of iron to cells. Mediates iron uptake in capsule cells of the developing kidney (By similarity).

Research Area

Image Data



Western blot analysis of extracts from MCF-7 cells using RM5355 at 1:1000.

Note

For research use only.