

Product Name: ERAP1 (15I15) Rabbit Monoclonal Antibody
Catalog #: AMRe10563

Summary

Production Name	ERAP1 (15I15) Rabbit Monoclonal Antibody
Description	Rabbit Monoclonal Antibody
Host	Rabbit
Application	WB
Reactivity	Human,Mouse,Rat

Performance

Conjugation	Unconjugated
Modification	Unmodified
Isotype	IgG
Clonality	Monoclonal
Form	Liquid
Storage	Store at 4°C short term. Aliquot and store at -20°C long term. Avoid freeze/thaw cycles.
Buffer	Supplied in 50mM Tris-Glycine(pH 7.4), 0.15M NaCl, 40%Glycerol, 0.01% New type preservative N and 0.05% BSA.
Purification	Affinity purification

Immunogen

Gene Name	ERAP1
Alternative Names	ALAP; Aminopeptidase PILS; APPILS; Arts1; Endoplasmic reticulum aminopeptidase 1; ERAAP; ERAAP1; Erap1; PILSA; PILSAP;
Gene ID	51752.0
SwissProt ID	Q9NZ08.A synthetic peptide of human ARTS1

Application

Dilution Ratio	WB: 1:1000-1:2000
Molecular Weight	107kDa

Product Name: ERAP1 (15I15) Rabbit Monoclonal Antibody
Catalog #: AMRe10563

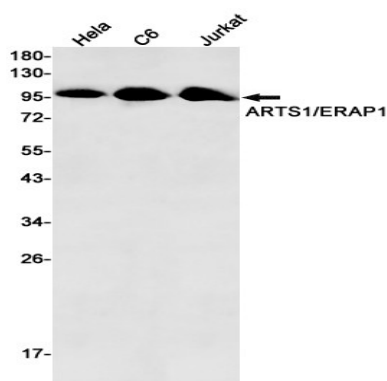


Background

Aminopeptidase that plays a central role in peptide trimming, a step required for the generation of most HLA class I-binding peptides. Peptide trimming is essential to customize longer precursor peptides to fit them to the correct length required for presentation on MHC class I molecules. Strongly prefers substrates 9-16 residues long. Aminopeptidase that plays a central role in peptide trimming, a step required for the generation of most HLA class I-binding peptides. Peptide trimming is essential to customize longer precursor peptides to fit them to the correct length required for presentation on MHC class I molecules. Strongly prefers substrates 9-16 residues long. Rapidly degrades 13-mer to a 9-mer and then stops. Preferentially hydrolyzes the residue Leu and peptides with a hydrophobic C-terminus, while it has weak activity toward peptides with charged C-terminus. May play a role in the inactivation of peptide hormones. May be involved in the regulation of blood pressure through the inactivation of angiotensin II and/or the generation of bradykinin in the kidney.

Research Area

Image Data



Western blot detection of ARTS1/ERAP1 in HeLa,C6,Jurkat cell lysates using ARTS1/ERAP1 antibody(1:500 diluted).

Note

For research use only.