

## Summary

<b>Production Name</b>	EEA1 (3B7) Rabbit Monoclonal Antibody
<b>Description</b>	Rabbit Monoclonal Antibody
<b>Host</b>	Rabbit
<b>Application</b>	WB
<b>Reactivity</b>	Human,Mouse,Rat

## Performance

<b>Conjugation</b>	Unconjugated
<b>Modification</b>	Unmodified
<b>Isotype</b>	IgG
<b>Clonality</b>	Monoclonal
<b>Form</b>	Liquid
<b>Storage</b>	Store at 4°C short term. Aliquot and store at -20°C long term. Avoid freeze/thaw cycles.
<b>Buffer</b>	Rabbit IgG in phosphate buffered saline , pH 7.4, 150mM NaCl, 0.02% New type preservative N and 50% glycerol. Store at +4°C short term. Store at -20°C long term. Avoid freeze / thaw cycle.
<b>Purification</b>	Affinity purification

## Immunogen

<b>Gene Name</b>	EEA1
<b>Alternative Names</b>	Early endosome antigen 1; EEA1; MST105; ZFYVE2;
<b>Gene ID</b>	8411.0
<b>SwissProt ID</b>	Q15075.

## Application

<b>Dilution Ratio</b>	WB 1:500-1:2000
<b>Molecular Weight</b>	162kDa

## Background

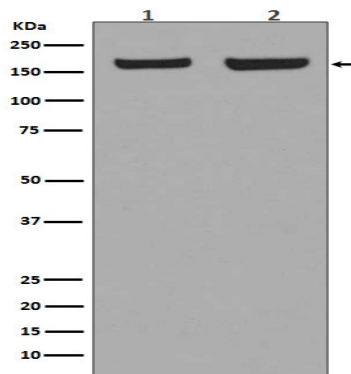
**Product Name: EEA1 (3B7) Rabbit Monoclonal Antibody**  
**Catalog #: AMRe10306**

---

EEA1 is an early endosomal marker and a Rab5 effector protein essential for early endosomal membrane fusion and trafficking (1-2). The carboxy terminus of EEA1 contains a FYVE domain which binds to phosphatidylinositol-3-phosphate (PtdIns(3)P), targeting EEA1 to early endosomes (3). The stable association of EEA1 with the endosomal membrane is regulated by PI3 kinase, Rab5 and calcium/calmodulin (4-6). Once on the membrane, EEA1 interacts with Rab5, NSF and syntaxin 13 to promote early endosomal membrane docking and fusion (7). Binds phospholipid vesicles containing phosphatidylinositol 3-phosphate and participates in endosomal trafficking.

## Research Area

## Image Data



Western blot analysis of EEA1 expression in (1) HeLa cell lysate; (2) NIH/3T3 cell lysate.

## Note

For research use only.