

Product Name: DYNLL1 (5C17) Rabbit Monoclonal Antibody
Catalog #: AMRe10233

Summary

Production Name	DYNLL1 (5C17) Rabbit Monoclonal Antibody
Description	Rabbit Monoclonal Antibody
Host	Rabbit
Application	WB
Reactivity	Human,Mouse,Rat

Performance

Conjugation	Unconjugated
Modification	Unmodified
Isotype	IgG
Clonality	Monoclonal
Form	Liquid
Storage	Store at 4°C short term. Aliquot and store at -20°C long term. Avoid freeze/thaw cycles.
Buffer	Supplied in 50mM Tris-Glycine(pH 7.4), 0.15M NaCl, 40%Glycerol, 0.01% New type preservative N and 0.05% BSA.
Purification	Affinity purification

Immunogen

Gene Name	DYNLL1
Alternative Names	DLC8; DLC1; DNCL1; DYNLL1; HDLC1; LC8a; PIN;
Gene ID	8655.0
SwissProt ID	P63167.A synthetic peptide of human DYNLL1

Application

Dilution Ratio	WB: 1:1000-1:5000
Molecular Weight	10kDa

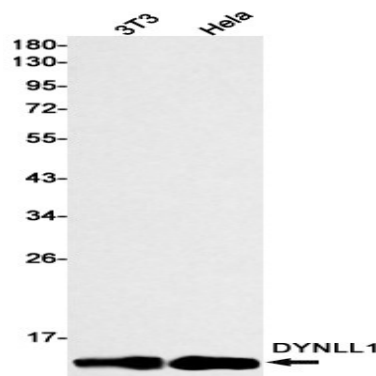
Background

Product Name: DYNLL1 (5C17) Rabbit Monoclonal Antibody
Catalog #: AMRe10233

Acts as one of several non-catalytic accessory components of the cytoplasmic dynein 1 complex that are thought to be involved in linking dynein to cargos and to adapter proteins that regulate dynein function. Cytoplasmic dynein 1 acts as a motor for the intracellular retrograde motility of vesicles and organelles along microtubules. May play a role in changing or maintaining the spatial distribution of cytoskeletal structures. Acts as one of several non-catalytic accessory components of the cytoplasmic dynein 1 complex that are thought to be involved in linking dynein to cargos and to adapter proteins that regulate dynein function. Cytoplasmic dynein 1 acts as a motor for the intracellular retrograde motility of vesicles and organelles along microtubules. May play a role in changing or maintaining the spatial distribution of cytoskeletal structures. Promotes transactivation functions of ESR1 and plays a role in the nuclear localization of ESR1.

Research Area

Image Data



Western blot detection of DYNLL1 in 3T3,HeLa cell lysates using DYNLL1 antibody(1:1000 diluted).

Note

For research use only.