

Product Name: DRD1 (18Z6) Rabbit Monoclonal Antibody
Catalog #: AMRe10157



Summary

Production Name	DRD1 (18Z6) Rabbit Monoclonal Antibody
Description	Rabbit Monoclonal Antibody
Host	Rabbit
Application	WB,ELISA
Reactivity	Human,Mouse,Rat

Performance

Conjugation	Unconjugated
Modification	Unmodified
Isotype	IgG
Clonality	Monoclonal
Form	Liquid
Storage	Store at 4°C short term. Aliquot and store at -20°C long term. Avoid freeze/thaw cycles.
Buffer	Rabbit IgG in phosphate buffered saline , pH 7.4, 150mM NaCl, 0.02% New type preservative N and 50% glycerol. Store at +4°C short term. Store at -20°C long term. Avoid freeze / thaw cycle.
Purification	Affinity purification

Immunogen

Gene Name	DRD1
Alternative Names	D(1A) dopamine receptor; DADR; Dopamine D1 receptor; DR D1A1; DRD1; DRD1A;
Gene ID	1812.0
SwissProt ID	P21728.

Application

Dilution Ratio	WB 1:500-1:2000
Molecular Weight	49kDa

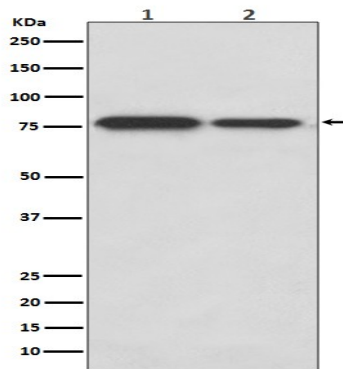
Product Name: DRD1 (18Z6) Rabbit Monoclonal Antibody
Catalog #: AMRe10157

Background

Dopamine receptor whose activity is mediated by G proteins which activate adenylyl cyclase. Dopamine receptor whose activity is mediated by G proteins which activate adenylyl cyclase.

Research Area

Image Data



Western blot analysis of DRD1 expression in (1) SH-SY5Y cell lysate; (2) Mouse kidney lysate.

Note

For research use only.