

**Product Name: Dopamine Receptor D3 (6H18) Rabbit
Monoclonal Antibody
Catalog #: AMRe10117**



Summary

Production Name	Dopamine Receptor D3 (6H18) Rabbit Monoclonal Antibody
Description	Rabbit Monoclonal Antibody
Host	Rabbit
Application	WB
Reactivity	Human,Mouse,Rat

Performance

Conjugation	Unconjugated
Modification	Unmodified
Isotype	IgG
Clonality	Monoclonal
Form	Liquid
Storage	Store at 4°C short term. Aliquot and store at -20°C long term. Avoid freeze/thaw cycles.
Buffer	Supplied in 50mM Tris-Glycine(pH 7.4), 0.15M NaCl, 40%Glycerol, 0.01% New type preservative N and 0.05% BSA.
Purification	Affinity purification

Immunogen

Gene Name	DRD3
Alternative Names	D(3) dopamine receptor; Dopamine D3 receptor; DRD3; ETM1; FET1;
Gene ID	1814.0
SwissProt ID	P35462.A synthetic peptide of human Dopamine Receptor D3/DRD3

Application

Dilution Ratio	WB: 1:1000
Molecular Weight	44kDa

Background

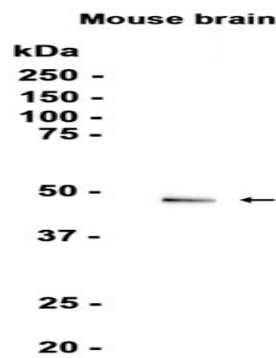
**Product Name: Dopamine Receptor D3 (6H18) Rabbit
Monoclonal Antibody
Catalog #: AMRe10117**



This is one of the five types (D1 to D5) of receptors for dopamine. The activity of this receptor is mediated by G proteins which inhibit adenylyl cyclase. Promotes cell proliferation. Dopamine receptor whose activity is mediated by G proteins which inhibit adenylyl cyclase. Promotes cell proliferation.

Research Area

Image Data



Western blot analysis of extracts from Mouse brain tissue using RM5657 at 1:1000.

Note

For research use only.