

Product Name: DNA Polymerase gamma (17H12) Rabbit Monoclonal Antibody
Catalog #: AMRe10066

Summary

Production Name	DNA Polymerase gamma (17H12) Rabbit Monoclonal Antibody
Description	Rabbit Monoclonal Antibody
Host	Rabbit
Application	WB,ELISA
Reactivity	Human,Mouse,Rat

Performance

Conjugation	Unconjugated
Modification	Unmodified
Isotype	IgG
Clonality	Monoclonal
Form	Liquid
Storage	Store at 4°C short term. Aliquot and store at -20°C long term. Avoid freeze/thaw cycles.
Buffer	Rabbit IgG in phosphate buffered saline , pH 7.4, 150mM NaCl, 0.02% New type preservative N and 50% glycerol. Store at +4°C short term. Store at -20°C long term. Avoid freeze / thaw cycle.
Purification	Affinity purification

Immunogen

Gene Name	POLG
Alternative Names	MDP1; PEO; PoIG alpha; POLG; POLG1; POLGA; SANDO; SCAE;
Gene ID	5428.0
SwissProt ID	P54098.

Application

Dilution Ratio	WB 1:500-1:2000
Molecular Weight	140kDa

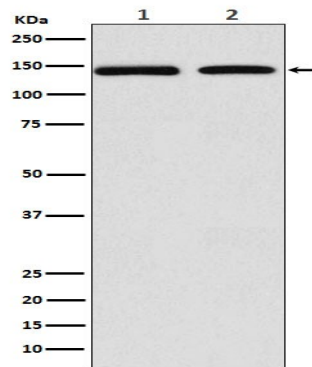
**Product Name: DNA Polymerase gamma (17H12) Rabbit
Monoclonal Antibody
Catalog #: AMRe10066**

Background

Involved in the replication of mitochondrial DNA. Involved in the replication of mitochondrial DNA. Associates with mitochondrial DNA.

Research Area

Image Data



Western blot analysis of DNA Polymerase gamma expression in (1) MCF7 cell lysate; (2) RAW264.7 cell lysate.

Note

For research use only.