

Product Name: Cytokeratin 6 (9I15) Rabbit Monoclonal Antibody
Catalog #: AMRe09749



Summary

Production Name	Cytokeratin 6 (9I15) Rabbit Monoclonal Antibody
Description	Rabbit Monoclonal Antibody
Host	Rabbit
Application	WB,ELISA
Reactivity	Human

Performance

Conjugation	Unconjugated
Modification	Unmodified
Isotype	IgG
Clonality	Monoclonal
Form	Liquid
Storage	Store at 4°C short term. Aliquot and store at -20°C long term. Avoid freeze/thaw cycles.
Buffer	Rabbit IgG in phosphate buffered saline , pH 7.4, 150mM NaCl, 0.02% New type preservative N and 50% glycerol. Store at +4°C short term. Store at -20°C long term. Avoid freeze / thaw cycle.
Purification	Affinity purification

Immunogen

Gene Name	
Alternative Names	CK 6A; CK 6B; CK 6C; CK 6D; CK 6E; CK-6C; CK-6E; K6a keratin; K6b keratin; K6C; K6c keratin; K6d keratin; K6e keratin; Keratin; KRT6A; KRT6B; KRT6C; KRT6D; KRT6E;
Gene ID	
SwissProt ID	P02538/P04259/P48668.

Application

Dilution Ratio	WB 1:1000-1:5000
Molecular Weight	60kDa

Product Name: Cytokeratin 6 (9I15) Rabbit Monoclonal Antibody
Catalog #: AMRe09749

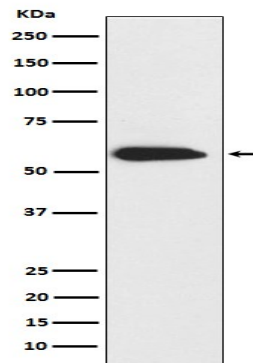


Background

There are at least six isoforms of human type II keratin-6 (K6). There are two types of cytoskeletal and microfibrillar keratin, I (acidic) and II (neutral to basic) (40-55 and 56-70 kDa, respectively).

Research Area

Image Data



Western blot analysis of CK6 expression in A431 cell lysate.

Note

For research use only.