

**Product Name: Cytokeratin 15 (19D17) Rabbit
Monoclonal Antibody
Catalog #: AMRe09729**

Summary

Production Name	Cytokeratin 15 (19D17) Rabbit Monoclonal Antibody
Description	Rabbit Monoclonal Antibody
Host	Rabbit
Application	WB,ELISA
Reactivity	Human,Mouse

Performance

Conjugation	Unconjugated
Modification	Unmodified
Isotype	IgG
Clonality	Monoclonal
Form	Liquid
Storage	Store at 4°C short term. Aliquot and store at -20°C long term. Avoid freeze/thaw cycles.
Buffer	Rabbit IgG in phosphate buffered saline , pH 7.4, 150mM NaCl, 0.02% New type preservative N and 50% glycerol. Store at +4°C short term. Store at -20°C long term. Avoid freeze / thaw cycle.
Purification	Affinity purification

Immunogen

Gene Name	KRT15
Alternative Names	CK-15; CK15; cytokeratin15; K15; K1C15; K1CO; keratin 15; Keratin-15; keratin-15, beta; KRT15; KRTB; type I cytoskeletal 15;
Gene ID	3866.0
SwissProt ID	P19012.

Application

Dilution Ratio	WB 1:1000-1:2000
Molecular Weight	49kDa

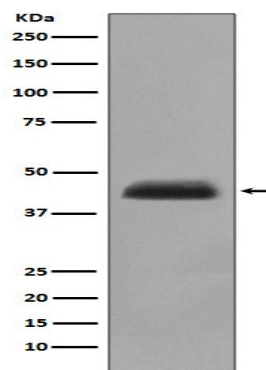
**Product Name: Cytokeratin 15 (19D17) Rabbit
Monoclonal Antibody
Catalog #: AMRe09729**

Background

The keratins are intermediate filament proteins responsible for the structural integrity of epithelial cells and are subdivided into cytokeratins and hair keratins. There are two types of cytoskeletal and microfibrillar keratin: type I (acidic; 40-55 kDa) [K9 to K20] and type II (neutral to basic; 56-70 kDa) [K1 to K8]. Both a basic and an acidic keratin are required for filament assembly. Note: This description may include information from UniProtKB.

Research Area

Image Data



Western blot analysis of Cytokeratin 15 expression in human fetal thymus lysate.

Note

For research use only.