

**Product Name: Cytokeratin 14 (11A9) Rabbit  
Monoclonal Antibody  
Catalog #: AMRe09723**

---

## Summary

<b>Production Name</b>	Cytokeratin 14 (11A9) Rabbit Monoclonal Antibody
<b>Description</b>	Rabbit Monoclonal Antibody
<b>Host</b>	Rabbit
<b>Application</b>	WB,ELISA
<b>Reactivity</b>	Human,Mouse,Rat

## Performance

<b>Conjugation</b>	Unconjugated
<b>Modification</b>	Unmodified
<b>Isotype</b>	IgG
<b>Clonality</b>	Monoclonal
<b>Form</b>	Liquid
<b>Storage</b>	Store at 4°C short term. Aliquot and store at -20°C long term. Avoid freeze/thaw cycles.
<b>Buffer</b>	Rabbit IgG in phosphate buffered saline , pH 7.4, 150mM NaCl, 0.02% New type preservative N and 50% glycerol. Store at +4°C short term. Store at -20°C long term. Avoid freeze / thaw cycle.
<b>Purification</b>	Affinity purification

## Immunogen

<b>Gene Name</b>	KRT14
<b>Alternative Names</b>	CK-14; CK14; cytokeratin 14; Cytokeratin-14; EBS3; EBS4; K14; K1C14; keratin 14; Keratin, type I cytoskeletal 14; Keratin-14; KRT14; NFJ;
<b>Gene ID</b>	3861.0
<b>SwissProt ID</b>	P02533.

## Application

<b>Dilution Ratio</b>	WB 1:1000-1:2000
<b>Molecular Weight</b>	52kDa

**Product Name: Cytokeratin 14 (11A9) Rabbit  
Monoclonal Antibody  
Catalog #: AMRe09723**

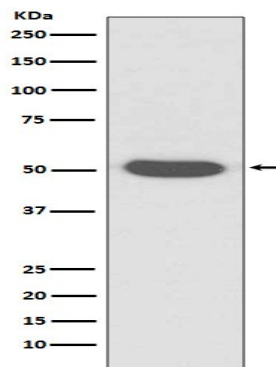
---

## Background

K14 is a type I cytoskeletal keratin. The keratins are intermediate filament proteins responsible for the structural integrity of epithelial cells and are subdivided into cytokeratins and hair keratins. There are two types of cytoskeletal and microfibrillar keratin: type I (acidic; 40-55 kDa) [K9 to K20] and type II (neutral to basic; 56-70 kDa) [K1 to K8]. Both a basic and an acidic keratin are required for filament assembly. The nonhelical tail domain is involved in promoting KRT5- KRT14 filaments to self-organize into large bundles and enhances the mechanical properties involved in resilience of keratin intermediate filaments in vitro.

## Research Area

## Image Data



Western blot analysis of Cytokeratin 14 expression in A431 cell lysate.

## Note

For research use only.