

**Product Name: Cytokeratin 13 (15D13) Rabbit
Monoclonal Antibody
Catalog #: AMRe09721**

Summary

Production Name	Cytokeratin 13 (15D13) Rabbit Monoclonal Antibody
Description	Rabbit Monoclonal Antibody
Host	Rabbit
Application	WB
Reactivity	Human,Mouse

Performance

Conjugation	Unconjugated
Modification	Unmodified
Isotype	IgG
Clonality	Monoclonal
Form	Liquid
Storage	Store at 4°C short term. Aliquot and store at -20°C long term. Avoid freeze/thaw cycles.
Buffer	Rabbit IgG in phosphate buffered saline , pH 7.4, 150mM NaCl, 0.02% New type preservative N and 50% glycerol. Store at +4°C short term. Store at -20°C long term. Avoid freeze / thaw cycle.
Purification	Affinity purification

Immunogen

Gene Name	KRT13
Alternative Names	Keratin, type I cytoskeletal 13; Krt1-13; Cytokeratin 13; CK13; Keratin 13; KRT13; WSN2;
Gene ID	3860.0
SwissProt ID	P13646.

Application

Dilution Ratio	WB 1:5000-1:20000
Molecular Weight	50kDa

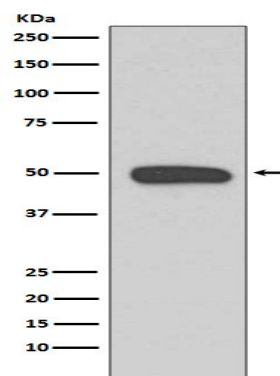
**Product Name: Cytokeratin 13 (15D13) Rabbit
Monoclonal Antibody
Catalog #: AMRe09721**

Background

Cytokeratin 13 is a member of the keratin gene family.

Research Area

Image Data



Western blot analysis of Cytokeratin 13 expression in A431 cell lysate.

Note

For research use only.